



# Ladenbau Shopfitting systems

System 60/30  
System 60/30

Technische Hinweise  
Technical information

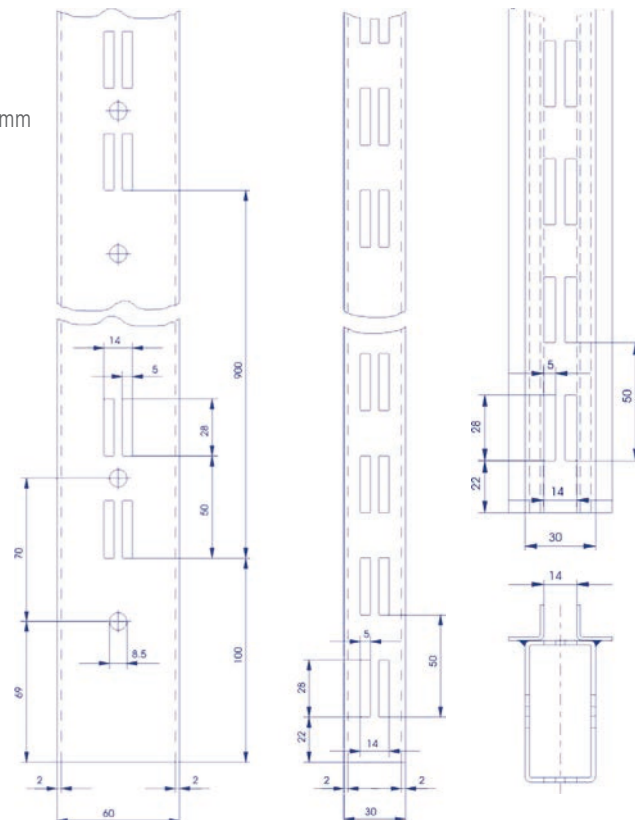
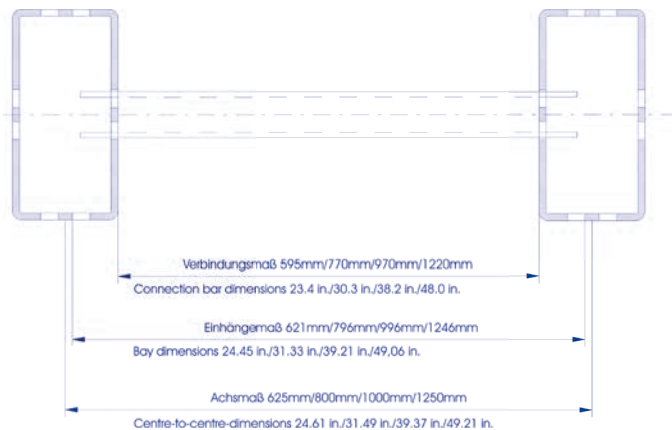
## System 60/30 System 60/30

### Charakteristik

- Branchenneutral einsetzbar
- Ideal für gradlinigen Streckenbau
- Basis-Baustein: Rechteckrohr 60x30x2 mm
- Raster 50 mm, 2-reihig
- Lochbild 14x28 mm

### Characteristics

- suitable for use in any business sector
- ideal for linear assembly
- basic module: rectangular tube 60x30x2 mm
- perforation 50 mm, double slotted
- slot dimension 14x28 mm



Säule mit L-Profil  
auf Anfrage  
Column with L-profile  
on demand

# Raster 50 Perforation 50

## Säule Column

System 60/30  
System 60/30

### Säule 60 x 30 mm

BE: 1 Stück  
OU: 1 piece

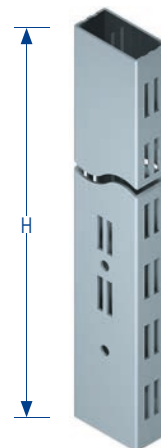
- Rechteckrohr, 60 x 30 x 2 mm
- Lochung 2-reihig, 2-seitig, 5 x 28 mm
- mit seitlicher Lochung
- ohne Gewinde

### Column 60 x 30 mm

- rectangular column, 60 x 30 x 2 mm
- double slotted on two sides, 5 x 28 mm
- with lateral perforation
- without thread

| Höhe<br>Height      | Art.-Nr.<br>Art.-No. |
|---------------------|----------------------|
| 1315 mm<br>51.7 in  | 11716-00000          |
| 2115 mm<br>83.3 in  | 11716-00002          |
| 2515 mm<br>99.0 in  | 11716-00004          |
| 2915 mm<br>114.8 in | 11716-00006          |

ohne Stellschrauben  
without levellers



### Säulenverlängerung

BE: 1 Stück  
OU: 1 piece

- für Säule 60 x 30 x 2 mm
- Lochung 2-reihig, 2-seitig, 5 x 28 mm

### Column extension

- For use with column 60 x 30 x 2 mm
- double slotted on two sides, 5 x 28 mm

| Höhe<br>Height    | Art.-Nr.<br>Art.-No. |
|-------------------|----------------------|
| 400 mm<br>15.7 in | 13323-00000          |



## Regalständer Single sided gondola

System 60/30  
System 60/30

### Regalständer 60 x 30 mm

BE: 1 Stück  
OU: 1 piece

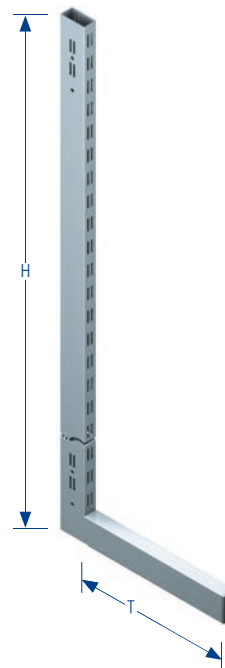
- Rechteckrohr 60 x 30 x 2 mm mit flachem Fuß
- Lochung 2-reihig, 2-seitig, 5 x 28 mm
- mit seitlicher Lochung
- konfektioniert mit 2 Gewindestücken M10
- inkl. zwei Abdeckkappen
- über einer Höhe von 1700 mm sind die Regalständer mit Wanddistanzhaltern (Seite 30) zu sichern!

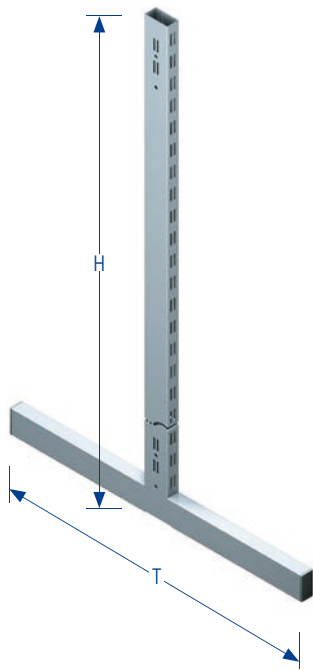
### Single sided gondola 60 x 30 mm

- rectangular tube 60 x 30 x 2 mm with base leg, low
- double slotted on two sides, 5 x 28 mm
- with lateral perforation
- fitted with 2 threaded plugs M10
- incl. two end caps
- use wall fixing (page 30) as from a height of 1700 mm!

| Höhe<br>Height      | Tiefe<br>Depth    | Art.-Nr.<br>Art.-No. |
|---------------------|-------------------|----------------------|
| 2115 mm<br>83.3 in  | 350 mm<br>13.8 in | 11815-00000          |
| 2515 mm<br>99.0 in  | 350 mm<br>13.8 in | 11815-00002          |
| 2915 mm<br>114.8 in | 350 mm<br>13.8 in | 11815-00004          |
| 2115 mm<br>83.3 in  | 450 mm<br>17.7 in | 11815-00006          |
| 2515 mm<br>99.0 in  | 450 mm<br>17.7 in | 11815-00008          |

ohne Stellschrauben  
without levellers





| Art.-Nr.<br>Art.-No. | Höhe<br>Height | Tiefe<br>Depth |
|----------------------|----------------|----------------|
|----------------------|----------------|----------------|

|             |                    |                   |
|-------------|--------------------|-------------------|
| 11906-00000 | 1315 mm<br>51.7 in | 760 mm<br>29.9 in |
| 11906-00002 | 1315 mm<br>51.7 in | 960 mm<br>37.8 in |

ohne Stellschrauben  
without levellers

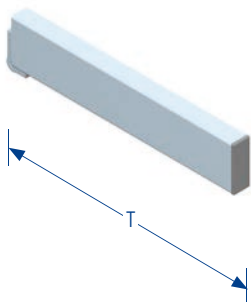
BE: 1 Stück  
OU: 1 piece

### Gondelständer 60 x 30 mm

- Rechteckrohr 60 x 30 x 2 mm mit flachem Fuß
- Lochung 2-reihig, 2-seitig, 5 x 28 mm
- mit seitlicher Lochung
- seitlich 2x Gewinde M6 zur Gondelkopfbefestigung
- konfektioniert mit 2 Gewindestücken M10
- inkl. drei Abdeckkappen

### Double sided gondola 60 x 30 mm

- rectangular tube 60 x 30 x 2 mm with base leg, low
- double slotted on two sides, 5 x 28 mm
- with lateral perforation
- lateral two M6 threads for fixing the gondola end frame
- fitted with 2 threaded plugs M10
- incl. three end caps



| Art.-Nr.<br>Art.-No. | Tiefe<br>Depth |
|----------------------|----------------|
|----------------------|----------------|

|             |                   |
|-------------|-------------------|
| 13100-00002 | 350 mm<br>13.8 in |
| 13100-00005 | 400 mm<br>15.7 in |

ohne Stellschrauben  
without levellers

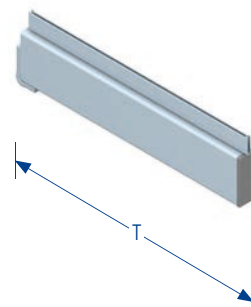
BE: 1 Stück  
OU: 1 piece

### Fußteil steckbar

- 80 x 30 mm Fußteil
- für alle Regalsäulen xx/30 mm geeignet
- inkl. Abdeckkappe
- mit 2x M10 Gewinde

### Base leg, plug-in

- Base leg 80 x 30 mm
- suitable for all columns xx/30 mm
- incl. end cap
- with 2x M10 thread



| Art.-Nr.<br>Art.-No. | Tiefe<br>Depth |
|----------------------|----------------|
|----------------------|----------------|

|             |                   |
|-------------|-------------------|
| 13100-00010 | 350 mm<br>13.8 in |
|-------------|-------------------|

ohne Stellschrauben  
without levellers

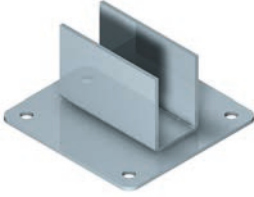
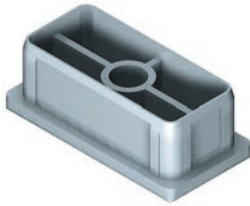
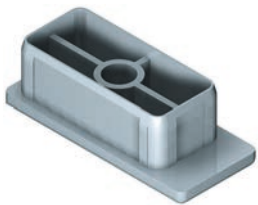
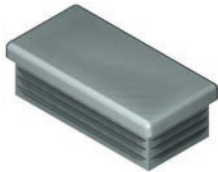
BE: 1 Stück  
OU: 1 piece

### Fußteil steckbar, mit Fachbodenauflage

- 80 x 30 mm Fußteil
- für alle Regalsäulen xx/30 mm geeignet
- inkl. Abdeckkappe
- mit 2x M10 Gewinde

### Base leg, plug-in with shelf holder

- Base leg 80 x 30 mm
- suitable for all columns xx/30 mm
- incl. end cap
- with 2x M10 thread

|   |                                       |  |   |
|---|---------------------------------------|--|---|
| <p><b>Säulenfuß</b></p> <ul style="list-style-type: none"> <li>• für Säule 60 x 30 mm</li> </ul> <p><b>Column base plate</b></p> <ul style="list-style-type: none"> <li>• for use with column 60 x 30 mm</li> </ul>   | <p>BE: 10 Stück<br/>OU: 10 pieces</p> | <p>Art.-Nr.<br/>Art.-No.</p> <p><b>13305-00021</b></p>   |    |
| <p><b>Rohreinsatz</b></p> <ul style="list-style-type: none"> <li>• Zinkdruckguss</li> <li>• mit Gewinde M10</li> <li>• für Säule 60 x 30 mm</li> </ul> <p><b>Tube insert</b></p> <ul style="list-style-type: none"> <li>• made of zinc diecast</li> <li>• with M10 thread</li> <li>• for use with column 60 x 30 mm</li> </ul>  | <p>BE: 10 Stück<br/>OU: 10 pieces</p> | <p><b>Farbe<br/>colour</b></p> <p>zink<br/>zinc</p> <p>Art.-Nr.<br/>Art.-No.</p> <p><b>12901-00002</b></p> |    |
| <p><b>Rohreinsatz<br/>mit Auflagefläche für Holzurückwand</b></p> <ul style="list-style-type: none"> <li>• Zinkdruckguss</li> <li>• mit Gewinde M10</li> <li>• für Säule 60 x 30 mm</li> </ul> <p><b>Tube insert<br/>with supporting area for rear wall</b></p> <ul style="list-style-type: none"> <li>• made of zinc diecast</li> <li>• with M10 thread</li> <li>• for use with column 60 x 30 mm</li> </ul> | <p>BE: 10 Stück<br/>OU: 10 pieces</p> | <p><b>Farbe<br/>colour</b></p> <p>zink<br/>zinc</p> <p>Art.-Nr.<br/>Art.-No.</p> <p><b>12901-00003</b></p> |  |
| <p><b>Deckkappe</b></p> <ul style="list-style-type: none"> <li>• Kunststoff</li> <li>• für Säule 60 x 30 mm</li> </ul> <p><b>End cap</b></p> <ul style="list-style-type: none"> <li>• plastic</li> <li>• for use with column 60 x 30 mm</li> </ul>  | <p>BE: 10 Stück<br/>OU: 10 pieces</p> | <p><b>Farbe<br/>colour</b></p> <p>grau<br/>grey</p> <p>Art.-Nr.<br/>Art.-No.</p> <p><b>12900-00020</b></p> |  |



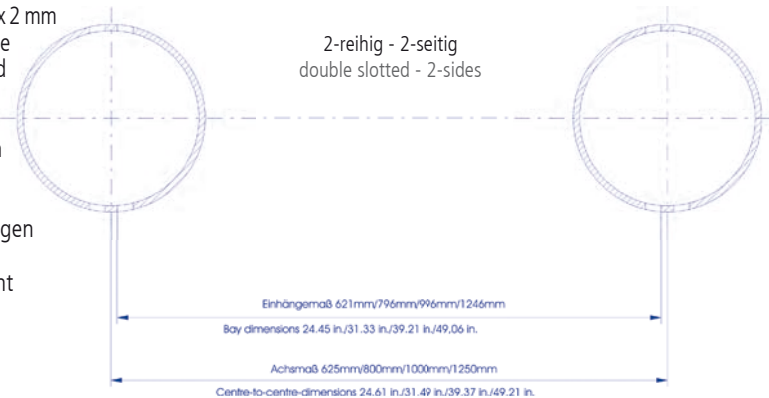
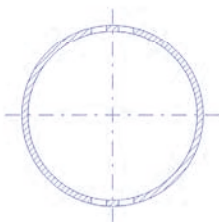
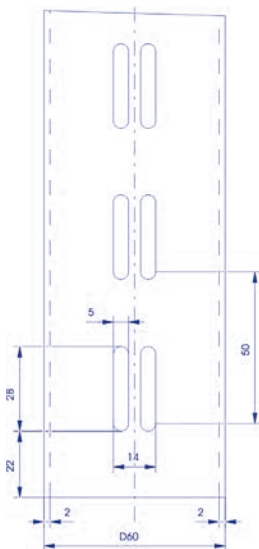
System 60 rund  
System 60 round

Technische Hinweise  
Technical information

## System 60 rund System 60 round

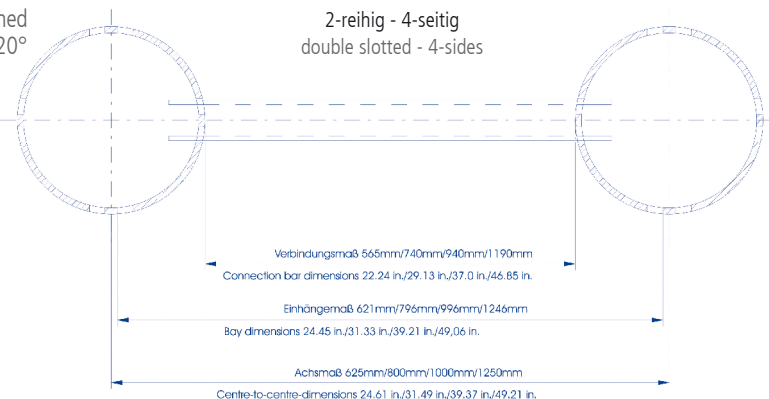
### Charakteristik

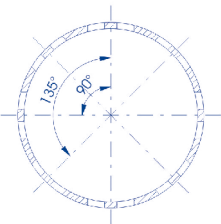
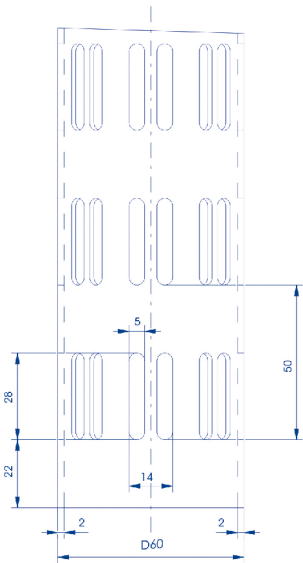
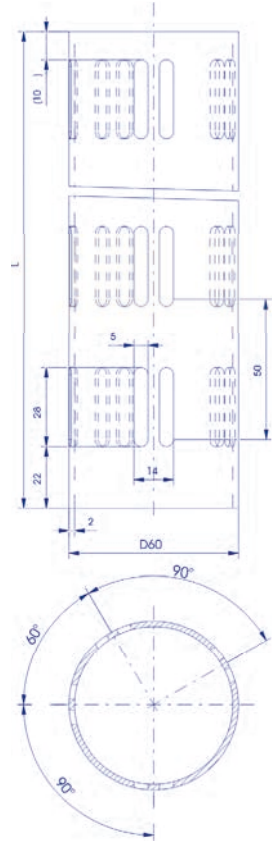
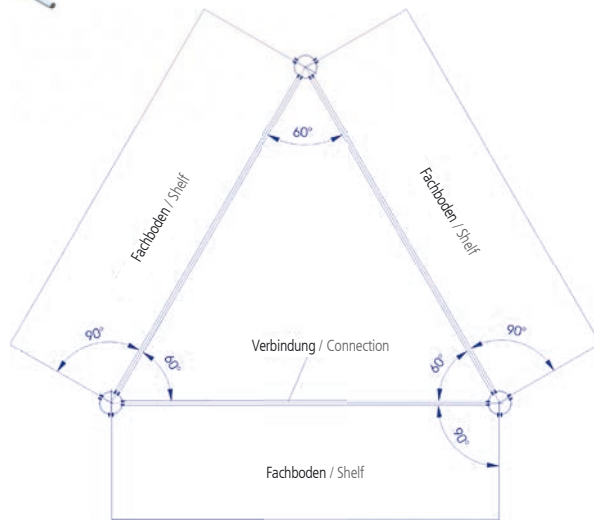
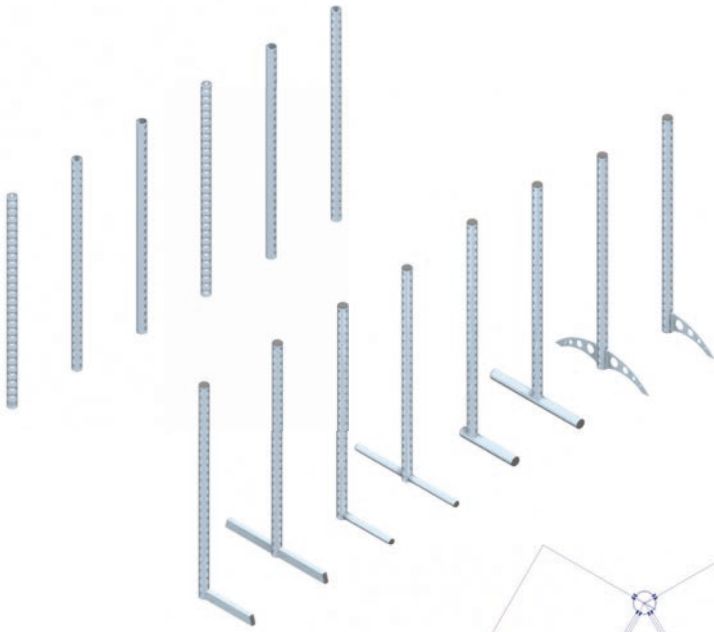
- 2-, 4- oder 8-seitig gelocht – je nach Designvorstellung oder Weiteraufbau
- Raster 50 mm, 2-reihig
- Basis-Baustein: Rundrohr D60 x 2 mm
- Doppellochung für verbesserte Einhängung des Zubehörs und der Bestückung
- Lochbild 5x28 mm oval
- die Stanzreihen können in den Winkeln 60° / 90° und 120° angeordnet werden
- individuelle Winkelabmessungen sind auf Anfrage möglich
- 1-, 2-, 3- oder 4-seitig gelocht



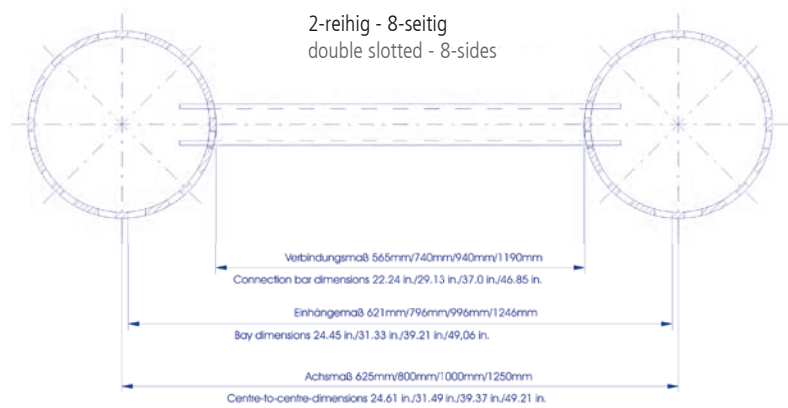
### Characteristics

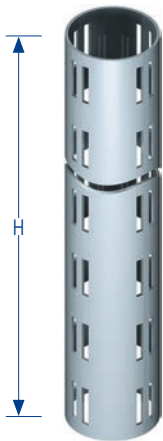
- slot types 2; 4; or 8 sided - depending on choice of design or additional requirements
- perforation 50 mm, double slotted
- basic module: round tube 60 x 2 mm
- double slotted for improved attachment of accessories and fittings
- slot dimension 5x28 mm, oval
- the perforation can be positioned in the angles 60° / 90° and 120°
- individual angles on demand
- slotted on 1-, 2-, 3- or 4-sides





2-reihig - x-winklig 90° / 60° / 90°  
double slotted - x-angled 90° / 60° / 90°





| Art.-Nr.<br>Art.-No. | Höhe<br>Height      |                                   |
|----------------------|---------------------|-----------------------------------|
| 12001-00024          | 1410 mm<br>55.5 in  | ohne<br>Gewinde-<br>mutter<br>M10 |
| 12001-00032          | 2210 mm<br>87.0 in  |                                   |
| 12001-00039          | 2610 mm<br>102.8 in | without<br>M10<br>thread          |
| 12001-00106          | 1410 mm<br>55.5 in  | mit<br>Gewinde-<br>mutter<br>M10  |
| 12001-00110          | 2210 mm<br>87.0 in  |                                   |
| 12001-00118          | 3010 mm<br>118.5 in | with<br>M10<br>thread             |

ohne Stellschrauben  
without levellers

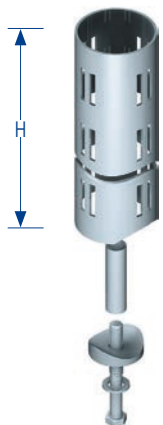
### Säule Ø 60 mm, 4-seitig

- Rundrohr Ø 60 x 2 mm
- Lochung 2-reihig, 4-seitig, 5 x 28 mm
- optional mit Gewindemutter M10 eingeschweißt für Fußplatte rund (Seite 15) oder für Stellschrauben (Seite 20-21)

### Column Ø 60 mm, 4 sides

- round column Ø 60 x 2 mm
- double slotted on four sides, 5 x 28 mm
- optional with M10 thread, welded, for use with round base (page 15) or with levellers (page 20-21)

BE: 1 Stück  
OU: 1 piece



| Art.-Nr.<br>Art.-No. | Höhe<br>Height     |  |
|----------------------|--------------------|--|
| 12001-00068          | 1410 mm<br>55.5 in |  |
| 12001-00079          | 2210 mm<br>87.0 in |  |

### Säule Ø 60 mm, 4-seitig, schraubbar

- Rundrohr Ø 60 x 2 mm
- Lochung 2-reihig, 4-seitig, 5 x 28 mm
- mit Gewindemutter für schraubbare Fußteile Durchmesser 60 mm (Seite 14)
- komplett mit Schraube, Distanzhülse und U-Scheibe

### Column Ø 60 mm, 4 sided, screw-in

- round column Ø 60 x 2 mm
- double slotted on four sides, 5 x 28 mm
- with bolt and cap for screw-in base leg diameter 60 mm (page 14)
- screws, distance shell and plain washer are included

BE: 1 Stück  
OU: 1 piece

# Raster 50 Perforation 50

## Regalständer Single sided gondola

## System 60 rund System 60 round

BE: 1 Stück  
OU: 1 piece

### Regalständer Ø 60 mm mit Fußteil Ø 60 mm

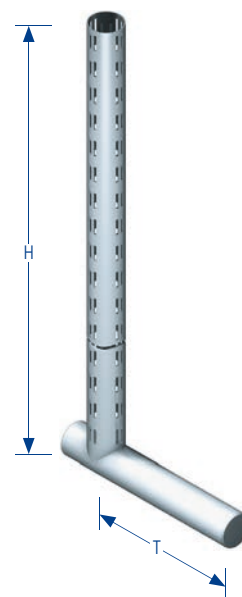
- Rundrohr Ø 60 x 2 mm
- Lochung 2-reihig, 4-seitig, 5 x 28 mm
- Fußteil Ø 60 x 2 mm angeschweißt
- konfektioniert mit zwei Gewinden M10
- inkl. 2 Abdeckkappen
- über einer Höhe von 1700 mm sind die Regalständer mit Wanddistanzhaltern (Seite 30) zu sichern!

### Single sided gondola Ø 60 mm with base leg Ø 60 mm

- round tube Ø 60 x 2 mm
- double slotted on four sides, 5 x 28 mm
- welded base leg Ø 60 x 2 mm
- fitted with two threaded holes M10
- incl. 2 end caps
- use wall fixing (page 30) as from a height of 1700 mm!

| Höhe<br>Height     | Tiefe<br>Depth    | Art.-Nr.<br>Art.-No. |
|--------------------|-------------------|----------------------|
| 1455 mm<br>57.3 in | 400 mm<br>15.7 in | <b>12101-00005</b>   |
| 2255 mm<br>88.8 in | 400 mm<br>15.7 in | <b>12101-00012</b>   |

ohne Stellschrauben  
without levellers



## Gondelständer Double sided gondola

## System 60 rund System 60 round

BE: 1 Stück  
OU: 1 piece

### Gondelständer Ø 60 mm mit Fußteil Ø 60 mm

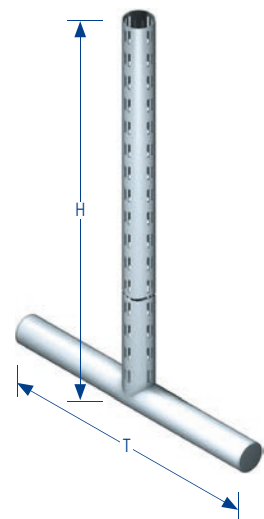
- Rundrohr Ø 60 x 2 mm
- Lochung 2-reihig, 4-seitig, 5 x 28 mm
- Fußteil aus Rundrohr Ø 60 x 2 mm angeschweißt
- konfektioniert mit zwei Gewinden M10
- inkl. 2 Abdeckkappen

### Double sided gondola Ø 60 mm with base leg Ø 60 mm

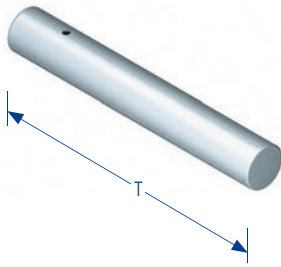
- round tube Ø 60 x 2 mm
- double slotted on four sides, 5 x 28 mm
- welded base leg Ø 60 x 2 mm
- fitted with two threaded holes M10
- incl. 2 end caps

| Höhe<br>Height     | Tiefe<br>Depth    | Art.-Nr.<br>Art.-No. |
|--------------------|-------------------|----------------------|
| 1455 mm<br>57.3 in | 860 mm<br>33.9 in | <b>12201-00009</b>   |

ohne Stellschrauben  
without levellers







| Art.-Nr.<br>Art.-No. | Tiefe<br>Depth |
|----------------------|----------------|
|----------------------|----------------|

|             |                   |
|-------------|-------------------|
| 13102-00004 | 300 mm<br>11.8 in |
|-------------|-------------------|

|             |                   |
|-------------|-------------------|
| 13102-00010 | 400 mm<br>15.7 in |
|-------------|-------------------|

ohne Stellschrauben  
without levellers

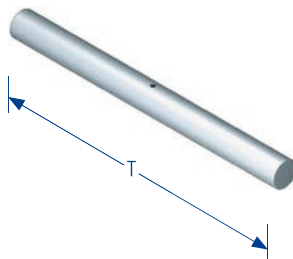
### Fußteil einseitig, Ø 60 mm, schraubbar

BE: 1 Stück  
OU: 1 piece

- für Rundsäule Ø 60 mm (Seite 12)
- konfektioniert mit zwei Gewindebuchsen M10

### Single sided base leg, Ø 60 mm, screw-in

- for screw mounting into round column Ø 60 mm, (page 12)
- two M10 thread inserts included



| Art.-Nr.<br>Art.-No. | Tiefe<br>Depth |
|----------------------|----------------|
|----------------------|----------------|

|             |                   |
|-------------|-------------------|
| 13102-00022 | 660 mm<br>26.0 in |
|-------------|-------------------|

|             |                   |
|-------------|-------------------|
| 13102-00029 | 860 mm<br>33.9 in |
|-------------|-------------------|

ohne Stellschrauben  
without levellers

### Fußteil zweiseitig, Ø 60 mm, schraubbar

BE: 1 Stück  
OU: 1 piece

- für Rundsäule Ø 60 mm (Seite 12)
- konfektioniert mit zwei Gewindebuchsen M10

### Double sided base leg, Ø 60 mm, screw-in

- for screw mounting into round column Ø 60 mm (page 12)
- two M10 thread inserts included



| Art.-Nr.<br>Art.-No. | Breite<br>Width |
|----------------------|-----------------|
|----------------------|-----------------|

|             |                 |
|-------------|-----------------|
| 13317-00003 | 25 mm<br>1.0 in |
|-------------|-----------------|

### Befestigungsklammer für Holzfachböden auf Fußteil Ø 60 mm

BE: 1 Stück  
OU: 1 piece

- zur Befestigung auf Fußteil Ø 60 mm
- steckbar

### Attachment clamp for wooden shelves on base leg Ø 60 mm

- for attaching on base leg Ø 60 mm
- plug-in

BE: 1 Stück  
OU: 1 piece

### Fußplatte rund, gewölbt, 3 mm

- für Rundsäule mit Gewinde M10
- inkl. Schraubenzubehör (M10x20 und U-Scheibe)
- für Standrohre als Einzelständer oder im Streckenbau einsetzbar

### Round base plate, arced, 3 mm

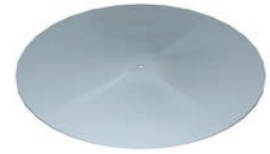
- for use with round column with M10 thread
- screw accessories included (M10x20 and grommet)
- can be used as uprights for free-standing display stands or in linear assembly

Ø

Art.-Nr.  
Art.-No.

550 mm  
21.7 in

13107-00004



BE: 10 Stück  
OU: 10 pieces

### Rohreinsatz

- Kunststoff
- mit Gewinde M10
- für Säule Ø 60 x 2 mm

### Tube insert

- plastic
- with M10 thread
- for use with round column Ø 60 x 2 mm

Ø

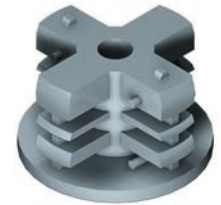
Farbe  
Colour

Art.-Nr.  
Art.-No.

60 mm  
2.4 in

grau  
grey

12900-00026



BE: 10 Stück  
OU: 10 pieces

### Deckkappe

- Kunststoff
- für Säule Ø 60 x 2 mm

### End cap

- plastic
- for use with round column Ø 60 x 2 mm

Ø

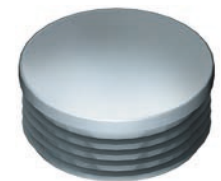
Farbe  
Colour

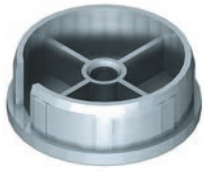
Art.-Nr.  
Art.-No.

60 mm  
2.4 in

grau  
grey

12900-00005





| Art.-Nr.<br>Art.-No. | Ø               | Farbe<br>Colour |
|----------------------|-----------------|-----------------|
| 12901-10012          | 60 mm<br>2.4 in | zink<br>zinc    |

### Rohreinsatz

- Zinkdruckguss
- mit Gewinde M10
- für Säule Ø 60 x 2 mm

### Tube insert

- made of zinc diecast
- with M10 thread
- for use with round column Ø 60 x 2 mm

BE: 10 Stück  
OU: 10 pieces



| Art.-Nr.<br>Art.-No. | Ø               | Höhe<br>Height   |
|----------------------|-----------------|------------------|
| 13300-00008          | 60 mm<br>2.4 in | 100 mm<br>3.9 in |

### Dekorativer Säulenabschluss, schräg

- für Säule Ø 60 x 2 mm
- steckbar
- sichtbare Höhe 100 mm

### Decorative column end, inclined

- fits into round columns Ø 60 x 2 mm
- plug-in
- visible height 100 mm

BE: 10 Stück  
OU: 10 pieces



Technische Hinweise  
Technical information

Weitere Säulentypen  
Other Column types

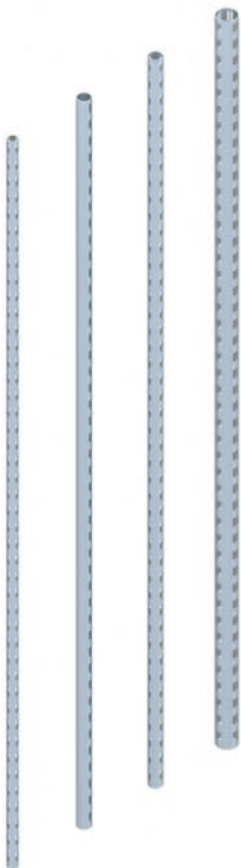
## System 30 x 30 System 30 x 30

### Charakteristik

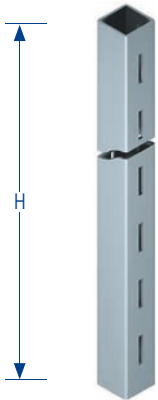
- Raster 50
- mit ein- und zweireihiger Lochung
- zwei- und vierseitige Lochung

### Characteristics

- Perforation 50
- with single and double slotted perforation
- with double sided and four sided perforation



BE: 1 Stück  
OU: 1 piece



| Art.-Nr.<br>Art.-No. | Höhe<br>Height |
|----------------------|----------------|
|----------------------|----------------|

|             |                     |
|-------------|---------------------|
| 11701-00044 | 2600 mm<br>102.4 in |
|-------------|---------------------|

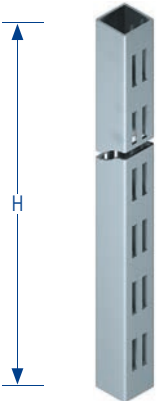
ohne Stellschrauben  
without levellers

### Vierkantsäule 30 x 30 mm, 2-seitig

- Quadratrohr 30 x 30 x 2 mm
- Lochung 1-reihig, 2-seitig, 4 x 25 mm
- ohne Gewinde

### Square column 30 x 30 mm, Double sided

- Square column 30 x 30 x 2 mm
- single slotted on two sides, 4 x 25 mm
- without thread



| Art.-Nr.<br>Art.-No. | Höhe<br>Height |
|----------------------|----------------|
|----------------------|----------------|

|             |                     |
|-------------|---------------------|
| 11703-00016 | 2615 mm<br>103.0 in |
|-------------|---------------------|

|             |                     |
|-------------|---------------------|
| 11703-00021 | 3015 mm<br>118.7 in |
|-------------|---------------------|

ohne Stellschrauben  
without levellers

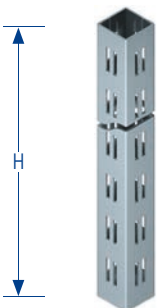
### Vierkantsäule 30 x 30 mm, 2-seitig

- Quadratrohr 30 x 30 x 2 mm
- Lochung 2-reihig, 2-seitig, 5 x 28 mm
- ohne Gewinde

### Square column 30 x 30 mm, double sided

- Square column 30 x 30 x 2 mm
- double slotted on two sides, 5 x 28 mm
- without thread

BE: 1 Stück  
OU: 1 piece



| Art.-Nr.<br>Art.-No. | Höhe<br>Height |
|----------------------|----------------|
|----------------------|----------------|

|             |                     |
|-------------|---------------------|
| 11703-00043 | 2615 mm<br>103.0 in |
|-------------|---------------------|

ohne Stellschrauben  
without levellers

### Vierkantsäule 30 x 30 mm, 4-seitig

- Quadratrohr 30 x 30 x 2 mm
- Lochung 2-reihig, 4-seitig, 5 x 28 mm
- ohne Gewinde

### Square column 30 x 30 mm, four sided

- Square column 30 x 30 x 2 mm
- double slotted on four sides, 5 x 28 mm
- without thread

BE: 1 Stück  
OU: 1 piece

**Rohreinsatz eckig**

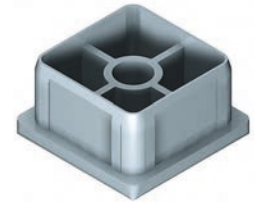
BE: 10 Stück  
OU: 10 pieces

- mit Gewinde M10
- Zinkdruckguss

### Tube Insert square

- with M10 thread
- made of zinc diecas

| für Rohr<br>for tube | Farbe<br>colour | Art.-Nr.<br>Art.-No. |
|----------------------|-----------------|----------------------|
| 30 x 30 x<br>2 mm    | grau<br>grey    | <b>12901-00000</b>   |



**Deckkappe**

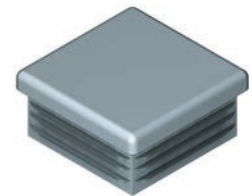
BE: 10 Stück  
OU: 10 pieces

- für Vierkant-Säulen
- Kunststoff

### End cap

- for Square Column
- plastic

| für Rohr<br>for tube | Farbe<br>colour | Art.-Nr.<br>Art.-No. |
|----------------------|-----------------|----------------------|
| 30 x 30 x<br>2 mm    | grau<br>grey    | <b>12900-00022</b>   |





| Art.-Nr.<br>Art.-No. | Länge<br>Length | Farbe<br>colour |
|----------------------|-----------------|-----------------|
|----------------------|-----------------|-----------------|

|             |                 |              |
|-------------|-----------------|--------------|
| 13307-00003 | 60 mm<br>2.4 in | grau<br>grey |
|-------------|-----------------|--------------|

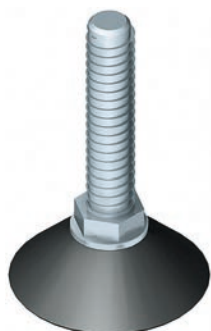
### Deckenverspannschraube

- Stahl / verzinkt
- mit Kunststoffteller Ø 45 mm
- für Rohreinsatz mit Gew. M10
- durchgeh. Stahldorn Ø 9x17mm
- Gewindelänge 60 mm

### Adjustable ceiling mount

- steel / galvanised
- with plastic disc Ø 45 mm
- for use with tube insert, M10 thread
- continous steel, mandrel Ø 9x17mm
- thread length 60 mm

BE: 10 Stück  
OU: 10 pieces



| Art.-Nr.<br>Art.-No. | Länge<br>Length | Farbe<br>colour |
|----------------------|-----------------|-----------------|
|----------------------|-----------------|-----------------|

|             |                 |                  |
|-------------|-----------------|------------------|
| 13000-00000 | 50 mm<br>1.9 in | weiß<br>white    |
| 13000-00001 | 50 mm<br>1.9 in | schwarz<br>black |
| 13000-00003 | 50 mm<br>1.9 in | grau<br>grey     |

### Stellschraube Ø 45 mm mit Kunststoffteller

- für Rohreinsatz mit Gewinde M10
- Stahl / verzinkt
- mit Kunststoffteller Ø 45 mm
- Gewindelänge 50 mm

### Leveller Ø 45 mm with plastic disc

- for use with tube insert with M10 thread
- steel / galvanised
- with plastic disc Ø 45 mm
- thread length 50 mm

BE: 10 Stück  
OU: 10 pieces



| Art.-Nr.<br>Art.-No. | Länge<br>Length | Farbe<br>colour |
|----------------------|-----------------|-----------------|
|----------------------|-----------------|-----------------|

|             |                 |                  |
|-------------|-----------------|------------------|
| 13001-10000 | 50 mm<br>2.0 in | schwarz<br>black |
|-------------|-----------------|------------------|

### Stellschraube Ø 30 mm mit Kunststoffteller, schwarz

- für Rohreinsatz mit Gewinde M10
- Stahl / verzinkt
- Gewindelänge 50 mm

### Leveller Ø 30 mm with plastic disc, black

- for use with tube insert, M10 thread
- steel / galvanised
- thread length 50 mm

BE: 10 Stück  
OU: 10 pieces

### Stellschraube Ø 35 mm mit Metallkappe

BE: 10 Stück  
OU: 10 pieces

- für Rohreinsatz mit Gewinde M10
- verchromt
- Kunststoffteil schwarz Ø 35 mm
- Gewindelänge 25 mm

### Leveller Ø 35 mm with chrome cap

- for use with tube insert with M10 thread
- chrome-plated
- plastic element: black Ø 35 mm
- thread length 25 mm

| Länge<br>Length | Farbe<br>colour  | Art.-Nr.<br>Art.-No. |
|-----------------|------------------|----------------------|
| 25 mm<br>1.0 in | schwarz<br>black | <b>13001-10001</b>   |



### Stellschraube Ø 60 mm mit Anschraubteller

BE: 10 Stück  
OU: 10 pieces

- für Rohreinsatz mit Gewinde M10
- Stahl / verzinkt
- mit Stahlteller Ø 60 mm
- Gewindelänge 50 mm

### Leveller Ø 60 mm with screw-on disc

- for use with tube insert, M10 thread
- steel / galvanised
- with steel plate Ø 60 mm
- thread length 50 mm

| Länge<br>Length | Farbe<br>colour | Art.-Nr.<br>Art.-No. |
|-----------------|-----------------|----------------------|
| 50 mm<br>2.0 in | zink<br>zinc    | <b>13001-10005</b>   |







Rahmensystem 30 x 30  
Frame system 30 x 30

Technische Hinweise  
Technical information

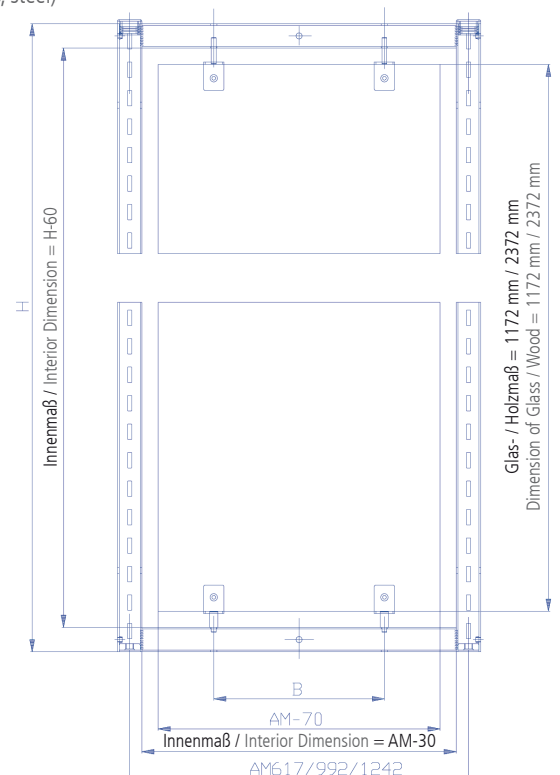
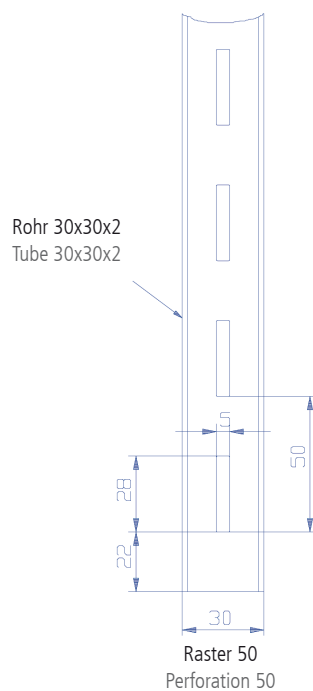
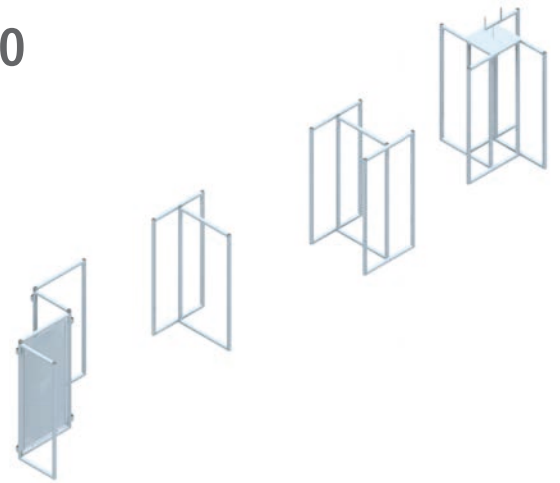
## Rahmensystem 30 x 30 Frame system 30 x 30

### Charakteristik

- Flexibilität durch unterschiedliches Verbauen des Grundrahmens
- Rahmeneinheit aus Rohr 30 x 30 mm
- Raster 50 und 35
- kombinierbar mit unterschiedlichen Materialien (Holz, Glas, Metall)

### Characteristics

- Flexibility by different ways of installation of the base frame
- Frame of tube 30 x 30 mm
- Perforation 50 and 35
- usable with different materials (wood, glass, steel)



# Raster 50 Perforation 50

## Grundrahmen Basic frame

## Rahmensystem 30 x 30 Frame system 30 x 30

BE: 1 Stück  
OU: 1 piece

### Grundrahmen R50

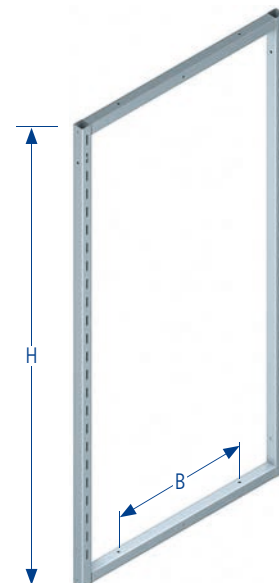
- Rohr 30 x 30 x 2 mm
- Lochung 1-reihig, 2-seitig, 5 x 28 mm
- für Rückwandbefestigung geeignet
- inklusive M10 Gewinde, eingeschweißt
- bei Höhe 1272 mm inkl. Deckkappen
- liches Rahmeninnenmaß Höhe -60 mm, Achsmaß -30 mm, ohne Berücksichtigung von Toleranzen

### Basic frame Perforation 50

- tube 30 x 30 x 2 mm
- single slotted, double sided, 5 x 28 mm
- suitable for rear wall attachment
- includes M10 thread, welded
- in case of height 1272 mm end caps are included
- intermediate space height -60 mm, center-to-center-dim. -30 mm, without consideration or tolerances

| Höhe<br>Height      | Achsmaß<br>Centre-to-<br>centre dim. | Maß B<br>Dim. B   | Art.-Nr.<br>Art.-No. |
|---------------------|--------------------------------------|-------------------|----------------------|
| 1272 mm<br>50.07 in | 625 mm<br>24.6 in                    | 310 mm<br>12.2 in | <b>12306-00100</b>   |
| 1272 mm<br>50.07 in | 1000 mm<br>39.4 in                   | 680 mm<br>26.8 in | <b>12306-00200</b>   |

ohne Stellschrauben  
without levellers



## Zubehör Accessories

## Rahmensystem 30 x 30 Frame system 30 x 30

BE: 1 Stück  
OU: 1 piece

### Verbindungshülse für Rahmen

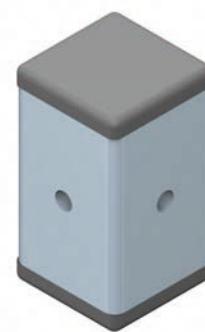
- zur Verbindung von Grund- und Seitenrahmen in Reihe, oder über Eck
- mit Gewinde M6, vierseitig
- mit zwei Abdeckkappen
- Linsenschraube M 6 x 40 mm nicht im Lieferumfang enthalten!

### Connection tube for frame

- for connection of base and side frame side by side, or round the corner
- with M6 thread, four sided
- with two end caps
- without raised countersunk cross head recessed screw M6 x 40 mm

Art.-Nr.  
Art.-No.

**12305-00000**





| Art.-Nr.<br>Art.-No. | Höhe<br>Height     |
|----------------------|--------------------|
| 12450-00053          | 1000 mm<br>39.4 in |

BE: 1 Stück  
OU: 1 piece

### Grundgestell 4-Arm Ständer, zerlegbar

- höhenverstellbar von 1250 bis 1700 mm
- mit 4 verschiedenen Abhängearmen bestückbar
- mit M8 Gewinde zur Aufnahme eines Displayhalters
- optional mit Rollen ausstattbar
- RAL 9006 Weißaluminium
- 325 x 325 x H1000
- inkl. 4 Fusteller
- passende Lenkrollen: Art.-Nr. 13311-00004 und 13311-00005, Seite 36
- Displayhalter: Art.-Nr. 12308-00000

### Base frame 4-arm rack, dismantable

- adjustable in height 1250 - 1700 mm
- with 4 different armes assemble
- with M8 thread for displayholder
- optional equip with castor
- RAL 9006 silver
- 325 x 325 x H1000
- incl. 4 levellers
- matching castors: art.-no. 13311-00004 and 13311-00005, page 36
- displayholder: art.-no. 12308-00000



| Art.-Nr.<br>Art.-No. |
|----------------------|
| 12308-00000          |

BE: 1 Stück  
OU: 1 piece

### Displayhalter

- Abmessung 12 x 150 x 215 mm
- mit Rundstab Ø 8 mm und Gewinde M8

### Display holder

- Dimension 12 x 150 x 215 mm
- with round tube Ø 8 mm and M8 thread

**Abhängearm 30/15, gerade**  
BE: 1 Stück  
OU: 1 piece

- mit Stift und 7 Arretierlöchern

**Single hook 30/15, straight**

- with pin and 7 locking holes

| Tiefe<br>Depth    | Farbe<br>colour            | Art.-Nr.<br>Art.-No. |
|-------------------|----------------------------|----------------------|
| 400 mm<br>15.7 in | verchromt<br>chrome-plated | <b>12450-00000</b>   |



**Abhängearm 30/15, schräg**  
BE: 1 Stück  
OU: 1 piece

- mit 9 Stiften und 7 Arretierlöchern

**Single hook 30/15, inclined**

- with 9 pins and 7 locking holes

| Tiefe<br>Depth    | Farbe<br>colour            | Art.-Nr.<br>Art.-No. |
|-------------------|----------------------------|----------------------|
| 400 mm<br>15.7 in | verchromt<br>chrome-plated | <b>12450-00001</b>   |



**Abhängearm 30/15, abgestuft**  
BE: 1 Stück  
OU: 1 piece

- mit 2 Stiften und 7 Arretierlöchern

**Single hook 30/15, stepped**

- with 2 pins and 7 locking holes

| Tiefe<br>Depth    | Farbe<br>colour            | Art.-Nr.<br>Art.-No. |
|-------------------|----------------------------|----------------------|
| 400 mm<br>15.7 in | verchromt<br>chrome-plated | <b>12450-00002</b>   |



**Abhängearm 30/15,  
135° gewinkelt**  
BE: 1 Stück  
OU: 1 piece

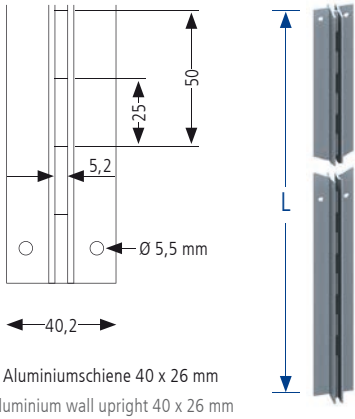
- mit Stift und 7 Arretierlöchern

**Single hook 30/15,  
135° angled**

- with pin and 7 locking holes

| Tiefe<br>Depth    | Farbe<br>colour            | Art.-Nr.<br>Art.-No. |
|-------------------|----------------------------|----------------------|
| 400 mm<br>15.7 in | verchromt<br>chrome-plated | <b>12450-00003</b>   |





| Art.-Nr.<br>Art.-No. | Länge<br>Length     |
|----------------------|---------------------|
| 13326-00000          | 3000 mm<br>118.1 in |

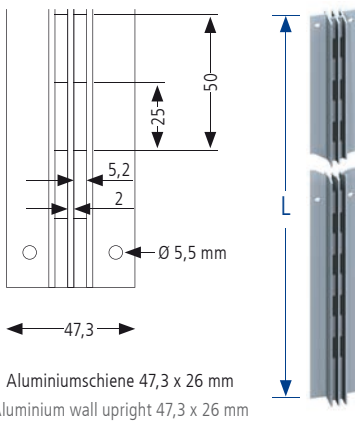
BE: 10 Stück  
OU: 10 piece

### Aluminium-Schiene, 1-reihig

- Spezialprofil für Rückwand 19 mm
- Lochung 1-reihig 5 x 25 mm, Raster 50
- Ausführung Aluminium

### Aluminium wall upright, single slot

- spezial profile for back panel 19 mm
- single slot 5 x 25 mm, perforation 50
- finish aluminium



| Art.-Nr.<br>Art.-No. | Länge<br>Length     |
|----------------------|---------------------|
| 13326-00007          | 3000 mm<br>118.1 in |

BE: 10 Stück  
OU: 10 piece

### Aluminium-Schiene, 2-reihig

- Spezialprofil für Rückwand 19 mm
- Lochung 2-reihig 5 x 25 mm, Raster 50
- Ausführung Aluminium

### Aluminium wall upright, double slot

- spezial profile for back panel 19 mm
- double slot 5 x 25 mm, perforation 50
- finish aluminium



| Art.-Nr.<br>Art.-No. | Länge<br>Length    |
|----------------------|--------------------|
| 10000-00600          | 995 mm<br>39.2 in  |
| 10000-00601          | 1495 mm<br>58.9 in |
| 10000-00602          | 1995 mm<br>78.9 in |

BE: 10 Stück  
OU: 10 piece

### Wandschiene, 1-reihig

- Höhe: 12 mm
- Breite: 16 mm
- Für Winkelträger 10300-006xx (Seite 37)
- Schlitzung 4 x 25 mm

### Wall uprights, single slot

- height: 12 mm
- width: 16 mm
- for angle bracket 10300-006xx (page 37)
- perforation 4 x 25 mm



| Art.-Nr.<br>Art.-No. | Länge<br>Length    |
|----------------------|--------------------|
| 10001-00600          | 995 mm<br>39.2 in  |
| 10001-00601          | 1495 mm<br>58.9 in |
| 10001-00602          | 1995 mm<br>78.9 in |

BE: 10 Stück  
OU: 10 piece

### Wandschiene, 2-reihig

- Höhe: 12 mm
- Breite: 25 mm
- Für Winkelträger 10300-006xx (Seite 37)
- Schlitzung 4 x 25 mm

### Wall uprights, double slot

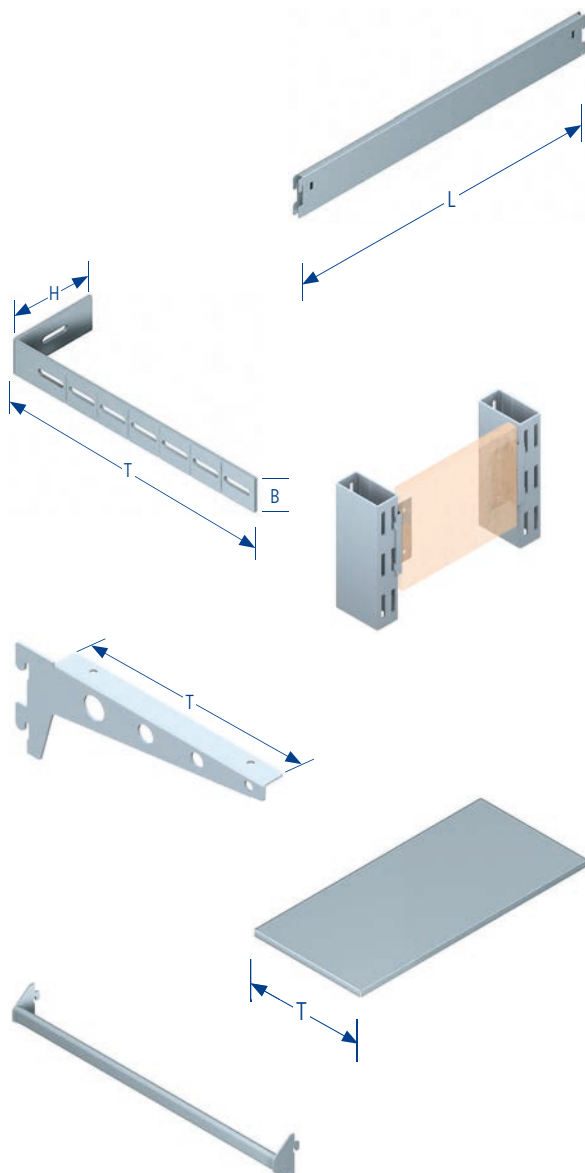
- height: 12 mm
- width: 25 mm
- for angle bracket 10300-006xx (page 37)
- perforation 4 x 25 mm



Montage und Bestückung  
Installation and Equipment

Montagematerial  
Installation material

## Montage und Bestückung Installation and Equipment



Verbindungen  
Connection bars

Distanzhalter  
Distance holder

Rückwandhalter  
Back panel support

Träger  
Brackets

Stahlfachböden  
Steel shelves

Abhängesystem 30/15  
Clothes hanger system 30/15

BE: 1 Stück  
OU: 1 piece



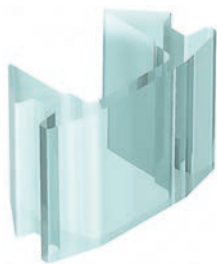
| Art.-Nr.<br>Art.-No. | Länge<br>Length    | Achsmaß<br>Centre-to-<br>centre dim. |
|----------------------|--------------------|--------------------------------------|
| 12801-00006          | 595 mm<br>23.4 in  | 625 mm<br>24.6 in                    |
| 12801-00026          | 770 mm<br>30.3 in  | 800 mm<br>31.5 in                    |
| 12801-00042          | 970 mm<br>38.2 in  | 1000 mm<br>39.4 in                   |
| 12801-00054          | 1220 mm<br>48.0 in | 1250 mm<br>49.2 in                   |
| 12801-00002          | 565 mm<br>22.2 in  | 625 mm<br>24.6 in                    |
| 12801-00021          | 740 mm<br>29.1 in  | 800 mm<br>31.5 in                    |
| 12801-00036          | 940 mm<br>37.0 in  | 1000 mm<br>39.4 in                   |
| 12801-00051          | 1190 mm<br>46.9 in | 1250 mm<br>49.2 in                   |

### Verbindung steckbar, U-Profil

- Materialstärke 1,5 mm, Stahlblech, 13 x 72 mm
- steckbar
- passend für Säule 30 x 30, 50 x 30, 60 x 30 und Ø 60 mm, für Lochung 2-reihig
- inkl. 2 Sicherungsclips

### Connection bar, U-profile, plug-in

- material thickness 1,5 mm, steel plate 13 x 72 mm
- plug-in
- applicable with column 30 x 30, 50 x 30 and 60 x 30 and Ø 60 mm with double perforation
- with two safety clips



BE: 100 Stück  
OU: 100 pieces

Art.-Nr.  
Art.-No.

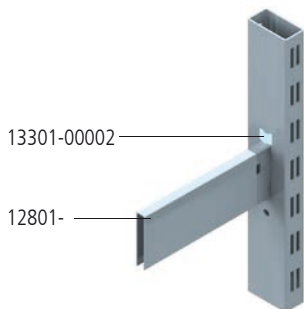
13301-00002

### Sicherungsclip für steckbare Verbindung

- für 2-reihige Lochung
- Kunststoff transparent
- für steckbare Verbindung (Seite 28)

### Safety clip for plug-in connection bars

- for double slotted columns
- plastic / transparent
- for connection bar (page 28)



Anwendungsbeispiel  
Application sample

# Raster 50 Perforation 50

## Verbindungen Connection bars

## Montagematerial Installation material

BE: 1 Stück  
OU: 1 piece

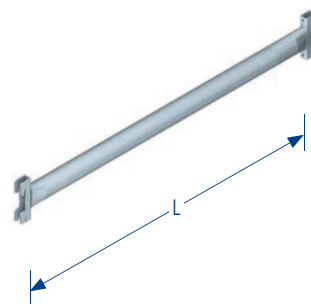
### Verbindung Ø 30, steckbar

- Rundrohr Ø 30 x 2 mm
- steckbar
- passend für Säule Ø 60 mm, für Lochung 2-reihig
- inkl. 2 Sicherungsclips

### Connection bar Ø 30, plug-in

- made of round tube Ø 30 x 2 mm
- plug-in
- applicable with column Ø 60 mm, with double perforation
- with two safety clips

| Länge<br>Length    | Achsmaß<br>Centre-to-<br>centre dim. | Art.-Nr.<br>Art.-No. |
|--------------------|--------------------------------------|----------------------|
| 565 mm<br>22.2 in  | 625 mm<br>24.6 in                    | <b>12800-00002</b>   |
| 940 mm<br>37.0 in  | 1000 mm<br>39.4 in                   | <b>12800-00018</b>   |
| 1190 mm<br>46.9 in | 1250 mm<br>49.2 in                   | <b>12800-00022</b>   |



BE: 1 Stück  
OU: 1 piece

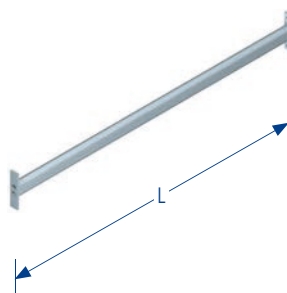
### Verbindung 30/20, schraubbar

- Rechteckrohr 30 x 20 x 1,5 mm
- schraubbar
- inkl. Schrauben und Muttern
- für Vierkanrohr B 30 mm
- bei fahrbaren Regaleinheiten aus Vierkanrohr, Breite 30 mm, darf ausschließlich diese Verbindung verwendet werden

### Connection bar, 30/20 screw-in

- made of tube 30 x 20 x 1,5 mm
- screw-in
- with screws and nuts
- for use with rectangular tube width 30 mm
- no joint other than this one may be used for assembling mobile shelving units made of rectangular tube 30 mm wide tubes

| Länge<br>Length    | Achsmaß<br>Centre-to-<br>centre dim. | Art.-Nr.<br>Art.-No. |
|--------------------|--------------------------------------|----------------------|
| 595 mm<br>23.4 in  | 625 mm<br>24.6 in                    | <b>12803-00018</b>   |
| 970 mm<br>38.2 in  | 1000 mm<br>39.4 in                   | <b>12803-00013</b>   |
| 1220 mm<br>48.0 in | 1250 mm<br>49.2 in                   | <b>12803-00021</b>   |



BE: 10 Stück  
OU: 10 piece

### Sicherheitsschraube M8

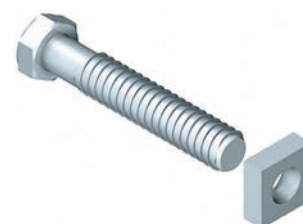
- M8 x 50 mm, verzinkt
- mit Mutter für steckbare Verbindung (Seite 28)
- muss bei fahrbaren Regalteilen zwingend montiert werden!
- für Vierkanrohr B 30 mm

### Safety screw M8

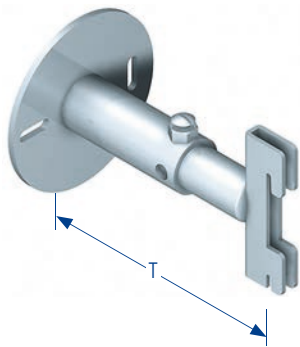
- M8 x 50 mm, steel/galvanised
- with nut for use with plug-in connection bar (page 28)
- must be mounted with all mobile shelving stands!
- for rectangular tubes width 30 mm

Art.-Nr.  
Art.-No.

**13310-00000**







| Art.-Nr.<br>Art.-No. | Tiefe<br>Depth             |
|----------------------|----------------------------|
| 13203-00004          | 50 - 75 mm<br>2.0 - 3.0 in |

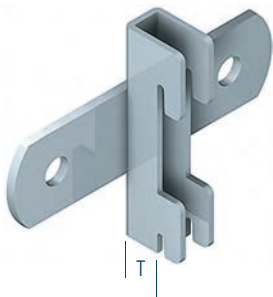
**Wanddistanzhalter, verstellbar**

- für 2-reihige Lochung
- steckbar mit Feststellschraube
- bei der Montage muss das Fixierloch durchgebohrt und mit einem Stift gesichert werden

BE: 10 Stück  
OU: 10 pieces

**Wall distance holder, adjustable**

- for double slotted columns
- plug-in with fixing screw
- for the safety must be drilled a locating hole and secured with a pin during the installation



| Art.-Nr.<br>Art.-No. | Tiefe<br>Depth   |
|----------------------|------------------|
| 13200-00020          | 14 mm<br>0.55 in |

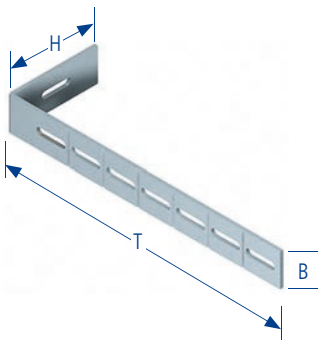
**Wanddistanzhalter, starr**

- für 2-reihige Lochung 5 x 28 mm und für 1-reihige Lochung 14 x 28 mm
- steckbar

BE: 10 Stück  
OU: 10 pieces

**Wall distance holder, rigid**

- for double slotted columns 5 x 28 mm and for single slotted columns 14 x 28 mm
- plug-in



| Art.-Nr.<br>Art.-No. | Tiefe<br>Depth    | Breite<br>Width  |
|----------------------|-------------------|------------------|
| 13204-10001          | 250 mm<br>9.84 in | 30 mm<br>1.18 in |

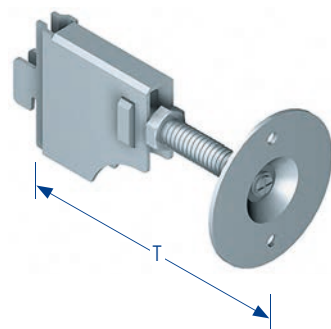
**Befestigungswinkel zur Wandmontage**

- Höhe 80 mm
- zur Wandbefestigung von Säulen und Regalständern
- verzinkt
- mit Langlöchern und Sollbruchstellen

BE: 10 Stück  
OU: 10 pieces

**Angle bracket for wall mounting**

- height 3.15 in
- for wall mounting of columns and gondolas
- steel / galvanised
- with longitudinal holes and predetermined breaking points



| Art.-Nr.<br>Art.-No. | Tiefe<br>Depth              |
|----------------------|-----------------------------|
| 13200-00012          | 70 - 100 mm<br>2.8 - 3.9 in |

**Wanddistanzhalter, verstellbar**

- für 2-reihige Lochung Raster 35 und 50
- steckbar
- mit Kontermutter M10

BE: 10 Stück  
OU: 10 pieces

**Wall distance holder, adjustable**

- for double slotted columns, perforation 35 and 50
- plug-in
- with M10 locknut thread

# Raster 50 Perforation 50

## Rückwandhalter Back panel holder

## Montagematerial Installation material

BE: 10 Paar  
OU: 10 pairs

### Rückwandhalter links und rechts

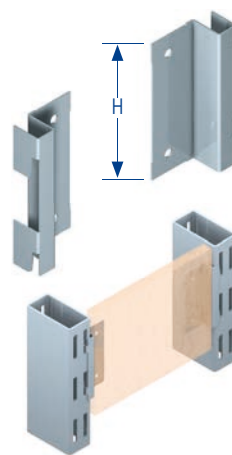
- für zweireihige Lochung
- für 16 mm Plattenstärke
- zum nachträglichen Einbau von Rückwänden
- jeweils 1 Paar links/rechts

### Back panel support left and right

- for double slotted columns
- for panel thickness of 16 mm
- for retro-fitting of back panels
- 1 pair (left/right) each

| Höhe<br>Height  | Plattenstärke<br>Panel thickness | Art.-Nr.<br>Art.-No. |
|-----------------|----------------------------------|----------------------|
| 73 mm<br>2.9 in | 16 mm<br>0.63 in                 | <b>13308-00004</b>   |

Anwendungsbeispiel  
Application sample



BE: 10 Stück  
OU: 10 pieces

### Rückwandhalter

- für seitliche Einhängung
- Stahl / unlackiert

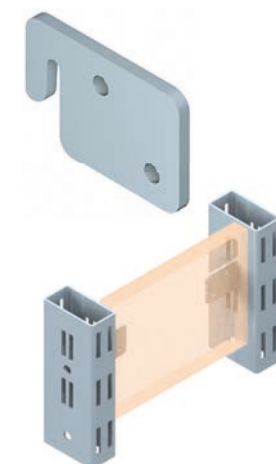
### Back panel support

- for attachment at side
- steel / unvarnished

Art.-Nr.  
Art.-No.

**13308-000**

Anwendungsbeispiel  
Application sample



BE: 10 Paar  
OU: 10 pairs

### Rückwandhalter links und rechts

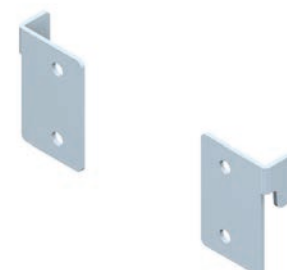
- Einzelhaken
- gekröpft
- passend für Raster 50 mm und 35 mm
- jeweils 1 Paar (links/rechts)

### Back panel support left and right

- single hook
- offset
- applicable for perforation 50 mm and 35 mm
- 1 pair (left/right) each

Art.-Nr.  
Art.-No.

**13308-00020**



BE: 10 Stück  
OU: 10 pieces

### Haltelasche für Rückwände

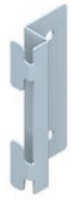
- verzinkt
- Breite 30 mm
- Befestigungsloch 5,3 mm

### Adapter for Rear wall

- steel
- width 30 mm
- fixing hole 5,3 mm

| Tiefe<br>Depth  | Art.-Nr.<br>Art.-No. |
|-----------------|----------------------|
| 20 mm<br>0.8 in | <b>13304-10002</b>   |
| 30 mm<br>1.2 in | <b>13304-10005</b>   |
| 36 mm<br>1.4 in | <b>13304-10004</b>   |





| Art.-Nr.<br>Art.-No. | Plattenstärke<br>Panel thickness |
|----------------------|----------------------------------|
|----------------------|----------------------------------|

|             |                  |
|-------------|------------------|
| 13308-00012 | 12 mm<br>0.47 in |
|-------------|------------------|

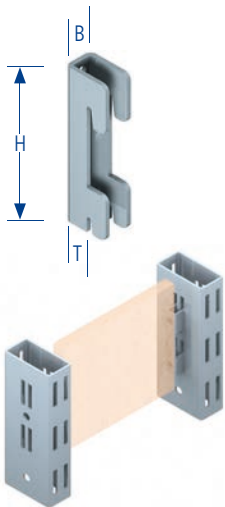
### Rückwandhalter beidseitig für Säule 30 mm

- links und rechts verwendbar
- für 2-reihige Lochung
- für Plattenstärke 12 oder 14 mm
- zum nachträglichen Einbau von Rückwänden

BE: 10 Stück  
OU: 10 pieces

### Back panel support, double sided for column 30 mm

- for use left and right
- for double perforation
- for panel thickness 12 or 14 mm
- for retro-fitting of back panels



| Art.-Nr.<br>Art.-No. | Höhe<br>Height | Breite<br>Width | Tiefe<br>Depth |
|----------------------|----------------|-----------------|----------------|
|----------------------|----------------|-----------------|----------------|

|             |                  |                 |                 |
|-------------|------------------|-----------------|-----------------|
| 13313-00011 | 70 mm<br>15.7 in | 13 mm<br>0.5 in | 11 mm<br>0.4 in |
|-------------|------------------|-----------------|-----------------|

Anwendungsbeispiel  
Application sample

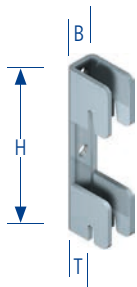
### Einhängeteil B13 mm

- für 2-reihige Lochung
- zur Befestigung von Holzrückwänden

BE: 10 Stück  
OU: 10 pieces

### Adapter B13 mm

- for double slotted columns
- for attaching wooden back panels



| Art.-Nr.<br>Art.-No. | Höhe<br>Height | Breite<br>Width | Tiefe<br>Depth |
|----------------------|----------------|-----------------|----------------|
|----------------------|----------------|-----------------|----------------|

|             |                  |                 |                 |
|-------------|------------------|-----------------|-----------------|
| 13313-00019 | 70 mm<br>15.7 in | 13 mm<br>0.5 in | 11 mm<br>0.4 in |
|-------------|------------------|-----------------|-----------------|

### Einhängeteil B13 mm mit Aussparung

- mit Aussparung zum nachträglichen Einbau
- für 2-reihige Lochung
- zur Befestigung von Holzrückwänden

BE: 10 Stück  
OU: 10 pieces

### Adapter B13 mm with recess

- with recess for retro-fitting
- for double slotted columns
- for attaching wooden back panels



| Art.-Nr.<br>Art.-No. |
|----------------------|
|----------------------|

|             |
|-------------|
| 13308-00010 |
|-------------|

### Mittelwandhalter

- für seitliche Einhängung
- Stahl / unlackiert

BE: 10 Stück  
OU: 10 pieces

### Back panel support

- for lateral attachment at side
- steel / unvarnished

# Raster 50 Perforation 50

## Rückwandhalter Back panel holder

## Montagematerial Installation material

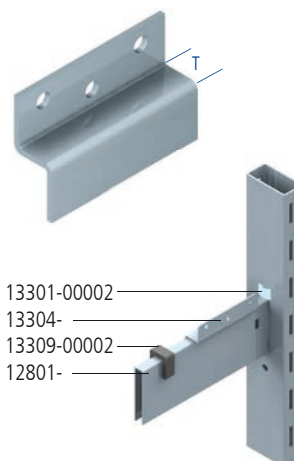
|   |                             |  |  |
|---|-----------------------------|--|--|
|   | BE: 10 Paar<br>OU: 10 pairs |  | <b>Art.-Nr.<br/>Art.-No.</b>             |
| <b>Anschraubwinkel zur Holzkorpusmontage</b>  |                             |  | <b>13308-10028</b>                       |
| <ul style="list-style-type: none"> <li>• für Fronteinhängung</li> <li>• jeweils 1 Paar (rechts/links)</li> <li>• Stahl / verzinkt</li> <li>• mit Senkbohrung Ø 4,3 mm</li> </ul>                  |                             |  | Anwendungsbeispiel<br>Application sample |
| <b>Accessory for mounting Wooden body</b>   |                             |  |  |
| <ul style="list-style-type: none"> <li>• for front installation</li> <li>• 1 pair (left/right) each</li> <li>• steel / galvanised</li> <li>• with holes for countersunk screw Ø 4,3 mm</li> </ul> |                             |  |  |



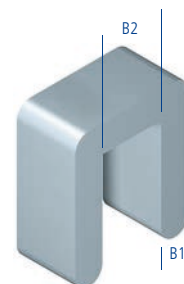
|   |                               |                         |                              |
|---|-------------------------------|-------------------------|------------------------------|
|   | BE: 10 Stück<br>OU: 10 pieces | <b>Farbe<br/>Colour</b> | <b>Art.-Nr.<br/>Art.-No.</b> |
| <b>Halter für Rück- und Mittelwände</b>   |                               | RAL 9005                | <b>13308-10011</b>           |
| <ul style="list-style-type: none"> <li>• zur Zwischenhängung von Rück- und Mittelwänden</li> <li>• mit 2 Anschraubbohrungen Ø 4,3 mm zur stirnseitigen Verschraubung an Holzwänden (ab 16 mm empfohlen)</li> </ul>        |                               |                         |                              |
| <b>Hook for back and middle panels</b>  |                               |                         |                              |
| <ul style="list-style-type: none"> <li>• for intermediate attachment of back and central panels</li> <li>• with 2 screws holes Ø 4,3 mm for screwing to wooden panels on face (recommended from 16 mm upwards)</li> </ul> |                               |                         |                              |



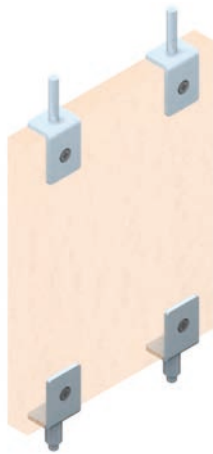
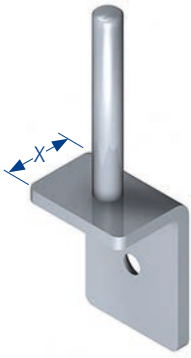
|  |                               |                        |  |
|--|-------------------------------|------------------------|--|
|  | BE: 10 Stück<br>OU: 10 pieces | <b>Tiefe<br/>Depth</b> | <b>Art.-Nr.<br/>Art.-No.</b>             |
| <b>Rückwandhalter für steckbare Verbindungen</b>   |                               | 13,5 mm<br>0.53 in     | <b>13304-00000</b>                       |
|  |                               | 19,5 mm<br>0.77 in     | <b>13304-00001</b>                       |
| <b>Rear wall bracket for Plug-in connection bars</b>   |                               |                        | Anwendungsbeispiel<br>Application sample |
| <ul style="list-style-type: none"> <li>• verzinkt</li> <li>• passend zu Verbindung Art.-Nr. 12801 mit Distanzclip Art.-Nr. 13309 verwenden (nicht inklusive)</li> </ul>        |                               |                        |  |
| <ul style="list-style-type: none"> <li>• steel / galvanised</li> <li>• suitable for connection bar Art.-No. 12801 with distance clip Art.-No. 13309 (not inclusive)</li> </ul> |                               |                        |  |



|  |                                 |                 |                  |                              |
|--|---------------------------------|-----------------|------------------|------------------------------|
|  | BE: 100 Stück<br>OU: 100 pieces | <b>B1</b>       | <b>B2</b>        | <b>Art.-Nr.<br/>Art.-No.</b> |
| <b>Distanzclip</b>   |                                 | 6 mm<br>0.24 in | 13 mm<br>0.51 in | <b>13309-00002</b>           |
| <ul style="list-style-type: none"> <li>• für steckbare Verbindungen Art.-Nr. 12801</li> <li>• schwarz</li> <li>• Zur Verwendung bei Rückwandhalter 19,5 mm Art.-Nr. 13304-00001</li> </ul> |                                 |                 |                  |                              |
| <b>Distance clip</b>   |                                 |                 |                  |                              |
| <ul style="list-style-type: none"> <li>• for plug-in connection bar Art.-No. 12801</li> <li>• black</li> <li>• in use with Rear Wall Holder 19,5mm Art.-Nr. 13304-00001</li> </ul>         |                                 |                 |                  |                              |



BE: 10 Stück  
OU: 10 pieces



| Art.-Nr.<br>Art.-No. | Rückwand<br>back panel | Halter<br>Support |
|----------------------|------------------------|-------------------|
| 13304-10007          | 19 mm<br>0.75 in       | oben<br>top       |
| 13304-10008          | 19 mm<br>0.75 in       | unten<br>bottom   |

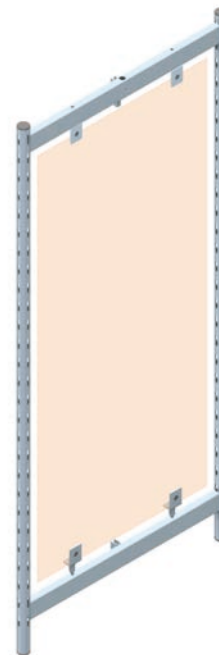
Anwendungsbeispiel  
Application sample

## Halter für Holzrückwände

- Halter mit Stift  $\varnothing$  6 mm
- einsetzbar zwischen 2 Verbindungen und in Grundrahmen
- Halter, unten und oben, mit 20 mm Distanz
- mit Senkbohrungen  $\varnothing$  4,5 mm zur einseitigen Befestigung an Holzwänden

## Back panel holder

- holder with pin  $\varnothing$  6 mm
- can be used between 2 tubular connection bars and in basic frame
- support, top and bottom, with 20 mm clearance
- with holes for countersunk screws  $\varnothing$  4,5 mm for one-sided attachment to wooden panels



BE: 100 Stück  
OU: 100 pieces

### Universal Rückwandclip 4-22 mm

- für 1-reihige Lochung
- für Plattenstärke 4-22 mm
- Kunststoff / glasklar

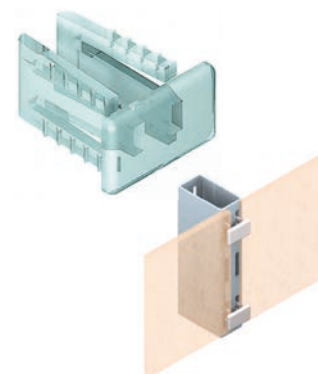
### Universal back panel clip 4-22 mm

- for single slotted columns
- for panel thickness of 4-22 mm
- plastic / crystal clear

Art.-Nr.  
Art.-No.

13309-10307

Anwendungsbeispiel  
Application sample



BE: 100 Stück  
OU: 100 pieces

### Universal Rückwandclip 4-22 mm

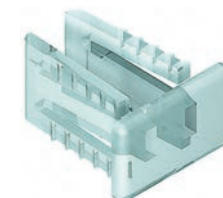
- für 2-reihige Lochung
- für Plattenstärke 4-22 mm
- Kunststoff / glasklar

### Universal back panel clip 4-22 mm

- for double slotted columns
- for panel thickness of 4-22 mm
- plastic / crystal clear

Art.-Nr.  
Art.-No.

13309-10306



BE: 100 Stück  
OU: 100 pieces

### Rückwandclip 8 und 19 mm

- für 2-reihige Lochung
- für Plattenstärke 8 mm vor der Säule
- für Plattenstärken 19 mm in Kombination mit steckbarer Verbindung und Distanzclip (Verbauung zwischen Säulen)
- Kunststoff / transparent

### Back panel clip 8 and 19 mm

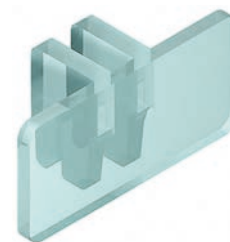
- for double slotted columns
- for panel thickness of 8 mm in front of the column
- for a board thickness of 19 mm in combination with pluggable joint and spacer clip (to be installed between the columns)
- plastic / transparent

Breite  
Width

50 mm  
2.0 in

Art.-Nr.  
Art.-No.

13309-00001



BE: 100 Stück  
OU: 100 pieces

### Rückwandclip 5 und 8 mm

- für 2-reihige Lochung
- für Plattenstärken von 5 und 8 mm geeignet
- Kunststoff / transparent

### Back panel clip 5 and 8 mm

- for double slotted columns
- for panel thickness of 5 and 8 mm
- plastic / transparent

Breite  
Width

25 mm  
1.0 in

Art.-Nr.  
Art.-No.

13309-00000



BE: 100 Stück  
OU: 100 pieces

### Rückwandklammer 10/12/16 mm

- für 1-reihige Lochung
- für Plattenstärken von 10, 12 und 16 mm vor den Säulen geeignet
- Kunststoff/glasklar

### Back panel clip 10/12/16 mm

- for single slotted columns
- for panel thickness of 10/12/16 mm in front of columns
- plastic/crystal clear

Plattenstärke  
Panel thickness

10 mm  
0.4 in

12 mm  
0.5 in

16 mm  
0.6 in

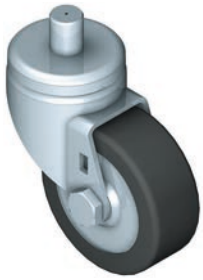
Art.-Nr.  
Art.-No.

13309-10301

13309-10302

13309-10305





| Art.-Nr.<br>Art.-No. | Einbauhöhe<br>Installation height |
|----------------------|-----------------------------------|
|----------------------|-----------------------------------|

|             |                 |
|-------------|-----------------|
| 13311-00004 | 75 mm<br>3.0 in |
|-------------|-----------------|

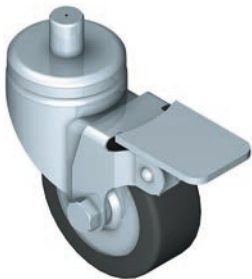
### Lenkrolle Ø 50 mm

- mit Gewinde M10
- verzinkt
- Belastung 50 kg

### Castor Ø 50 mm

- with M10 thread
- galvanised
- weight loading 50 kg

BE: 1 Stück  
OU: 1 piece



| Art.-Nr.<br>Art.-No. | Einbauhöhe<br>Installation height |
|----------------------|-----------------------------------|
|----------------------|-----------------------------------|

|             |                 |
|-------------|-----------------|
| 13311-00005 | 75 mm<br>3.0 in |
|-------------|-----------------|

### Lenkrolle Ø 50 mm, feststellbar

- mit Gewinde M10
- verzinkt
- Belastung 50 kg

### Castor Ø 50 mm, lockable

- with M10 thread
- galvanised
- weight loading 50 kg

BE: 1 Stück  
OU: 1 piece



| Art.-Nr.<br>Art.-No. | Einbauhöhe<br>Installation height |
|----------------------|-----------------------------------|
|----------------------|-----------------------------------|

|             |                  |
|-------------|------------------|
| 13311-00000 | 100 mm<br>3.9 in |
|-------------|------------------|

### Lenkrolle Ø 75 mm

- mit Gewinde M10
- verzinkt
- Belastung 50 kg

### Castor Ø 75 mm

- with M10 thread
- galvanised
- weight loading 50 kg

BE: 1 Stück  
OU: 1 piece



| Art.-Nr.<br>Art.-No. | Einbauhöhe<br>Installation height |
|----------------------|-----------------------------------|
|----------------------|-----------------------------------|

|             |                  |
|-------------|------------------|
| 13311-00001 | 100 mm<br>3.9 in |
|-------------|------------------|

### Lenkrolle Ø 75 mm, feststellbar

- mit Gewinde M10
- verzinkt
- Belastung 50 kg

### Castor Ø 75 mm, lockable

- with M10 thread
- galvanised
- weight loading 50 kg

BE: 1 Stück  
OU: 1 piece

BE: 10 Paar  
OU: 10 pairs

### Winkelträger, aufliegend

- mit zwei Anschraubbohrungen, Langlöcher 5 x 10 mm
- Tiefe 230/280 mm Tragkraft 50 kg / Paar
- Tiefe 330/380 mm Tragkraft 70 kg / Paar
- für Wandschienen 10000 und 10001 (Seite 26)

### Angle bracket, screw-on

- with two screw holes, longitudinal holes 5 x 10 mm
- depth 230/280 mm load capacity 50 kg / pairs
- depth 330/380 mm load capacity 70 kg / pairs
- for wall uprights 10000 and 10001 (page 26)

| Tiefe<br>Depth    | Art.-Nr.<br>Art.-No. |
|-------------------|----------------------|
| 230 mm<br>9.1 in  | 10300-00601          |
| 280 mm<br>11.0 in | 10300-00602          |
| 330 mm<br>13.0 in | 10300-00603          |
| 380 mm<br>15.0 in | 10300-00604          |



BE: 10 Paar  
OU: 10 pairs

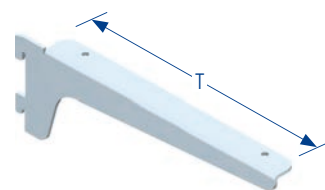
### Winkelträger, aufliegend

- passende Kunststoffsauger Art.-Nr. 11605-10001
- Tragkraft 50 kg / Träger

### Angle bracket, screw-on

- applicable for suction pad art.-no. 11605-10001
- load capacity 50 kg / bracket

| Tiefe<br>Depth    | Art.-Nr.<br>Art.-No. |
|-------------------|----------------------|
| 300 mm<br>11.8 in | 10300-00509          |
| 350 mm<br>13.8 in | 10300-00512          |



BE: 10 Paar  
OU: 10 pairs

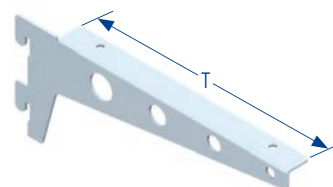
### Winkelträger mit Designlochung, aufliegend

- passende Kunststoffsauger Art.-Nr. 11605-10001
- Tragkraft 55 kg / Träger

### Angle bracket with perforated design, screw-on

- applicable for suction pad art.-no. 11605-10001
- load capacity 55 kg / bracket

| Tiefe<br>Depth    | Art.-Nr.<br>Art.-No. |
|-------------------|----------------------|
| 230 mm<br>9.1 in  | 10303-00003          |
| 330 mm<br>13.0 in | 10303-00007          |



BE: 10 Paar  
OU: 10 pairs

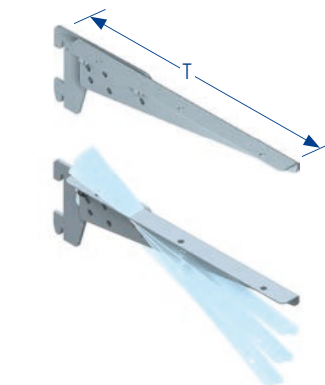
### Träger aufliegend, verstellbar

- mit einem verstellbaren Arm: 10°, 20°, 30°
- Tragkraft 55 kg / Träger
- passende Kunststoffsauger Art.-Nr. 11605-10001

### Bracket, screw-on, adjustable

- with one adjustable arm: 10°, 20°, 30°
- load capacity 55 kg / bracket
- applicable for suction pad art.-no. 11605-10001

| Tiefe<br>Depth    | Art.-Nr.<br>Art.-No. |
|-------------------|----------------------|
| 250 mm<br>9.8 in  | 10400-00013          |
| 300 mm<br>11.8 in | 10400-00020          |
| 350 mm<br>13.8 in | 10400-00027          |
| 400 mm<br>15.7 in | 10400-00034          |







| Art.-Nr.<br>Art.-No. | Glasstärke<br>Glass<br>thickness |
|----------------------|----------------------------------|
|----------------------|----------------------------------|

|             |                |
|-------------|----------------|
| 10501-10117 | 8 mm<br>0.3 in |
|-------------|----------------|

|             |                 |
|-------------|-----------------|
| 10501-10119 | 10 mm<br>0.4 in |
|-------------|-----------------|

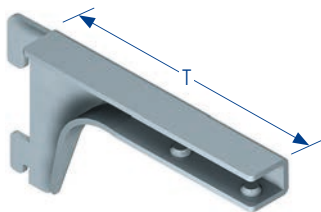
### Glasbodenträger 8-10 mm

- für Glasbodenstärke 8-10 mm
- klemmende Verbindung
- 2 Bolzen Ø 10 mm und mit 6 mm Gummiring als Rutschsicherung
- Tragkraft 20 kg / Träger

BE: 10 Paar  
OU: 10 pairs

### Glass shelf bracket 8-10 mm

- for glass shelves with thickness of 8-10 mm
- for clamping shelves
- 2 studs Ø 10 mm with anti-slip-ring
- load capacity 20 kg / bracket



| Art.-Nr.<br>Art.-No. | Tiefe<br>Depth |
|----------------------|----------------|
|----------------------|----------------|

|             |                  |
|-------------|------------------|
| 10500-00005 | 120 mm<br>4.7 in |
|-------------|------------------|

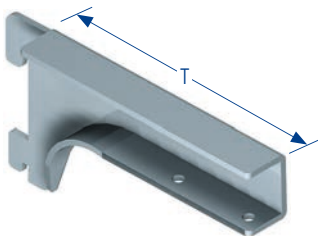
### Glasbodenträger 8-10 mm

- für Glasbodenstärke 8-10 mm
- mit je 2 Gewindestiften M8
- Tragkraft 55 kg / Träger

BE: 10 Paar  
OU: 10 pairs

### Glass shelf bracket 8-10 mm

- for glass shelves, 8-10 mm thick
- with two threaded plugs M8
- load capacity 55 kg / bracket



| Art.-Nr.<br>Art.-No. | Tiefe<br>Depth |
|----------------------|----------------|
|----------------------|----------------|

|             |                  |
|-------------|------------------|
| 10504-00005 | 120 mm<br>4.7 in |
|-------------|------------------|

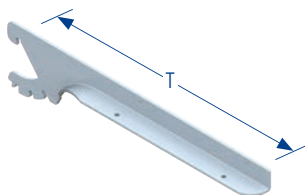
### Holzbodenträger 22 mm

- für Holzbödenstärke bis 22 mm
- Tragkraft 55 kg / Träger

BE: 10 Paar  
OU: 10 pairs

### Wooden shelf bracket 22 mm

- for wooden shelves, 22 mm thick
- load capacity 55 kg / bracket



| Art.-Nr.<br>Art.-No. | Tiefe<br>Depth |
|----------------------|----------------|
|----------------------|----------------|

|             |                   |
|-------------|-------------------|
| 10404-10017 | 300 mm<br>11.8 in |
|-------------|-------------------|

|             |                   |
|-------------|-------------------|
| 10404-10019 | 350 mm<br>13.8 in |
|-------------|-------------------|

|             |                   |
|-------------|-------------------|
| 10404-10021 | 400 mm<br>15.7 in |
|-------------|-------------------|

### Holzbodenträger 19 mm, einliegend

- für Holzböden von 19 mm
- verstellbar 0° gerade, 1x 10° steigend und 2 x 20° geneigt
- mit 2 Anschraubbohrungen Ø 4,3 mm
- Tragkraft 30 kg / Träger

BE: 10 Paar  
OU: 10 pairs

### Wooden shelf bracket 19 mm, for drop-in shelves

- for wooden shelves with thickness of 19 mm
- adjustable 0° straight, 1x10° rising, 2x20° inclined
- with 2 screw holes Ø 4,3 mm
- load capacity 30 kg / bracket

# Raster 50 Perforation 50

## Träger Brackets

## Bestückungselemente Equipment

BE: 10 Paar  
OU: 10 pairs

### Holzbodenträger 22 mm, einliegend

- für Holzböden von 22 mm
- verstellbar 0° gerade, 1x10° steigend und 2 x 20° geneigt
- 2 Anschraubbohrungen Ø 4,3 mm
- Tragkraft 30 kg / Träger

### Wooden shelf bracket 22 mm, for drop-in shelves

- for wooden shelves, 22 mm thick
- adjustable 0° straight, 1x10° rising 2x20° inclined
- 2 screw holes Ø 4,3 mm
- load capacity 30 kg / bracket

**Tiefe**  
**Depth**

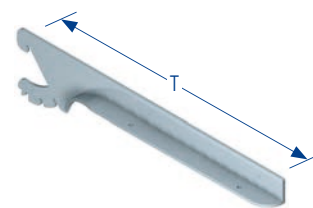
**Art.-Nr.**  
**Art.-No.**

350 mm  
13.8 in

**10405-10015**

400 mm  
15.7 in

**10405-10017**



BE: 10 Paar  
OU: 10 pairs

### Träger zur Zwischenhängung

- für Holz- und Glasböden
- für 1-reihige Lochung
- für Säulen und Schienen
- Tragkraft 20 kg / Träger
- passende Kunststoffsauger Art.-Nr. 11605-10002

### Bracket for intermediate attachment

- for wooden and glass shelves
- for single slotted columns and uprights
- load capacity 20 kg / bracket
- appropriate suction pad art.-no. 11605-10002

**Tiefe**  
**Depth**

**Art.-Nr.**  
**Art.-No.**

200 mm  
7.9 in

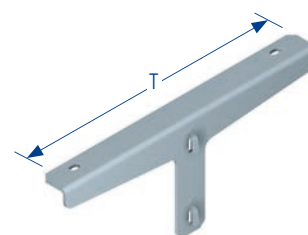
**10505-00005**

300 mm  
11.9 in

**10505-00011**

400 mm  
15.7 in

**10505-00017**



BE: 10 Stück  
OU: 10 pieces

### Glasbodenträger für Zwischenhängung

- mit Einhängeschale für Rundrohre Ø 60 mm mit 2 Bohrungen Ø 6,75 mm für Gummisauger
- inkl. Kunststoffsauger montiert
- Tragkraft 20 kg / Träger

### Glass shelf bracket for intermediate attachment

- with attachment shell for round column Ø 60 mm
- with 2 pre-drilled holes Ø 6,75 mm for suction pad
- suction pad mounted
- load capacity 20 kg / bracket

**Tiefe**  
**Depth**

**Art.-Nr.**  
**Art.-No.**

200 mm  
1.9 in

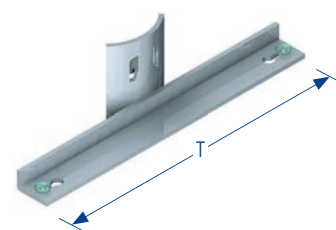
**10508-10011**

300 mm  
11.8 in

**10508-10012**

400 mm  
15.7 in

**10508-10013**



BE: 100 Stück  
OU: 100 pieces

### Kunststoffsauger

- für Bohrung Ø 5 mm
- transparent

### Suction pad

- applicable for hole Ø 5 mm
- transparent

**Ø**

**Art.-Nr.**  
**Art.-No.**

Ø 13,5 mm  
Ø 0.5 in

**11605-10001**

Ø 18 mm  
Ø 0.7 in

**11605-10002**





| Art.-Nr.<br>Art.-No. | Tiefe<br>Depth   |
|----------------------|------------------|
| 12409-00008          | 250 mm<br>9.8 in |

### Konfektionsträger

- für Flachovalrohr 30 x 15
- mit zwei Einhänggehaken
- für 1-teilige Lochung
- Tragkraft 30 kg / Träger

### Garment Display bracket

- for flat oval tube 30 x 15
- with two hooks
- for single perforation
- load capacity 30 kg / bracket

BE: 10 Stück  
OU: 10 pieces



| Art.-Nr.<br>Art.-No. | Tiefe<br>Depth    |
|----------------------|-------------------|
| 12409-00009          | 330 mm<br>13.0 in |

### Konfektionsträger

- für Flachovalrohr 30 x 15
- mit drei Einhänggehaken
- für 1-teilige Lochung
- Tragkraft 30 kg / Träger

### Garment Display bracket

- for flat oval tube 30 x 15
- with three hooks
- for single perforation
- load capacity 30 kg / bracket

BE: 10 Stück  
OU: 10 pieces



| Art.-Nr.<br>Art.-No. |
|----------------------|
| 12409-00006          |

### Einhängeteil für Flachovalrohr 30 x 15

- links und rechts verwendbar
- für 2-reihige Lochung

### Adapter for flat oval tube 30 x 15

- for use left and right
- for double slotted columns

BE: 10 Stück  
OU: 10 pieces



| Art.-Nr.<br>Art.-No. | Länge<br>Length    |
|----------------------|--------------------|
| 12404-00014          | 1000 mm<br>39.4 in |

### Flachovalrohr

- 30 x 15 mm
- verchromt

### Flat oval tube

- 30 x 15 mm
- chrome-plated

BE: 1 Stück  
OU: 1 piece

# Raster 50 Perforation 50

## Stahlfachböden Steel shelves

## Bestückungselemente Equipment

### Stahlfachboden

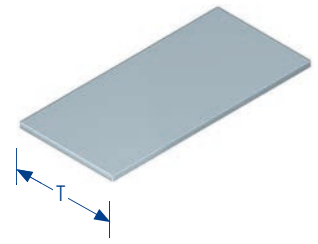
BE: 5 Paar  
OU: 5 pairs

- Tragkraft 40 kg

### Steel shelf

- load capacity 40 kg

| Tiefe<br>Depth    | Achismaß<br>Centre-to-<br>centre dim. | Art.-Nr.<br>Art.-No. |
|-------------------|---------------------------------------|----------------------|
| 300 mm<br>11.9 in | 1000 mm<br>39.4 in                    | <b>10701-00019</b>   |
| 350 mm<br>13.8 in | 1000 mm<br>39.4 in                    | <b>10701-00022</b>   |



### Träger für Stahlfachböden

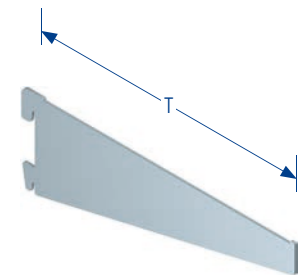
BE: 10 Stück  
OU: 10 pieces

- für Lochung Raster 50 mm
- Tragkraft 40 kg / Träger

### Bracket for steel shelves

- for perforation 50 mm
- load capacity 40 kg / bracket

| Tiefe<br>Depth    | Art.-Nr.<br>Art.-No. |
|-------------------|----------------------|
| 300 mm<br>11.9 in | <b>10600-00004</b>   |
| 350 mm<br>13.8 in | <b>10600-00008</b>   |



### Buchtablar

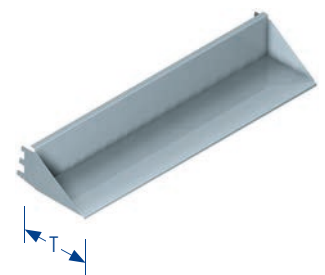
BE: 1 Stück  
OU: 1 piece

- verstellbar 0° gerade, 10° nach oben
- mit drei Einhängenhaken
- Stahlblech
- für Lochung Raster 50 mm

### Book shelf

- adjustable 0° straight, 10° rising
- with three hooks
- steel
- for perforation 50 mm

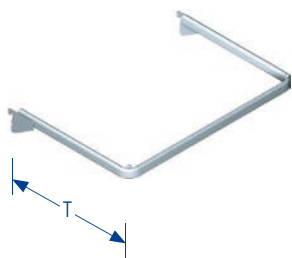
| Tiefe<br>Depth   | Achismaß<br>Centre-to-<br>centre dim. | Art.-Nr.<br>Art.-No. |
|------------------|---------------------------------------|----------------------|
| 200 mm<br>7.9 in | 625 mm<br>24.6 in                     | <b>10714-00100</b>   |
| 200 mm<br>7.9 in | 1000 mm<br>39.4 in                    | <b>10714-00200</b>   |
| 200 mm<br>7.9 in | 1250 mm<br>49.2 in                    | <b>10714-00300</b>   |



# Chrom Chrome

Abhängesystem  
Clothes hanger system

Chrom  
Chrome



| Art.-Nr.<br>Art.-No. | Tiefe<br>Depth    | Achsmaß<br>Centre-to-<br>centre dim. |
|----------------------|-------------------|--------------------------------------|
| 12418-00000          | 250 mm<br>9.8 in  | 625mm<br>24.6 in                     |
| 12418-00001          | 250 mm<br>9.8 in  | 1000 mm<br>39.4 in                   |
| 12418-00002          | 250 mm<br>9.8 in  | 1250 mm<br>49.2 in                   |
| 12418-00003          | 350 mm<br>13.8 in | 625 mm<br>24.6 in                    |
| 12418-00004          | 350 mm<br>13.8 in | 1000 mm<br>39.4 in                   |
| 12418-00005          | 350 mm<br>13.8 in | 1250 mm<br>49.2 in                   |

Art.-Nr.  
Art.-No.

13303-10003

## Tragrahmen 30 x 15, gebogen

- aus Flachovalrohr 30 x 15 mm
- verchromt
- mit einem Einhängehaken
- Raster 35 mm und 50 mm

## Support frame 30 x 15, curved type

- made of flat oval tube 30 x 15 mm
- chrome-plated
- with one lug
- perforation 35 mm and 50 mm

BE: 5 Stück  
OU: 5 pieces

## Bodenhalter für Tragrahmen

- passend zu Tragrahmen 30 x 15 Art.-Nr. 12418
- verzinkt
- für Böden bis 15 mm Dicke
- inkl. Kunststoffsauger

## Shelf support for support frame

- for support frame 30 x 15, art.-no. 12418
- steel/galvanised
- for shelves up to 15 mm thickness
- incl. suction pad

BE: 10 Stück  
OU: 10 pieces

### Trageschiene 30/15, geschweißt

BE: 5 Stück  
OU: 5 pieces

- aus Flachovalrohr 30 x 15 mm
- verchromt
- für Abhängearm mit C-Schale
- mit einem Einhängehaken
- für Raster 35 mm und 50 mm

### Support rail 30/15, welded

- made of flat oval tube 30 x 15 mm
- chrome-plated
- for suspended arms with c-shell
- with one lug
- perforation 35 mm and 50 mm

| Achsmaß<br>Centre-to-<br>centre dim. | Art.-Nr.<br>Art.-No. |
|--------------------------------------|----------------------|
| 625 mm<br>24.6 in                    | 12401-00000          |
| 1000 mm<br>39.4 in                   | 12401-00006          |
| 1250 mm<br>49.2 in                   | 12401-00007          |



### Abhängerträger Ø 6 mm, gerade, 90°

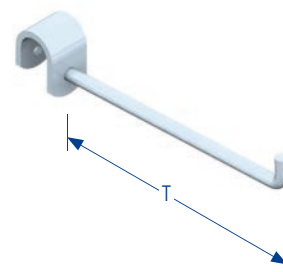
BE: 10 Stück  
OU: 10 pieces

- mit C-Schale
- für Trageschiene
- verchromt

### Single hook Ø 6 mm, straight , 90°

- with c-shell
- for support rail
- chrome-plated

| Tiefe<br>Depth   | Art.-Nr.<br>Art.-No. |
|------------------|----------------------|
| 120 mm<br>4.7 in | 12405-00020          |
| 225 mm<br>8.9 in | 12405-00021          |



### Abhängerträger Ø 7 und Ø 9 mm, gerade

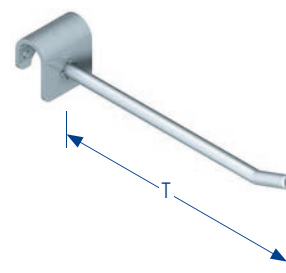
BE: 10 Stück  
OU: 10 pieces

- mit C-Schale
- für Trageschiene
- verchromt

### Single hook Ø 7 mm and Ø 9 mm, straight

- with c-shell
- for use with support rail
- chrome-plated

| Tiefe<br>Depth    | Ø               | Art.-Nr.<br>Art.-No. |
|-------------------|-----------------|----------------------|
| 150 mm<br>5.9 in  | 7 mm<br>0.27 in | 12405-00002          |
| 250 mm<br>9.8 in  | 7 mm<br>0.27 in | 12405-00005          |
| 300 mm<br>11.6 in | 9 mm<br>0.35 in | 12405-00006          |
| 400 mm<br>15.7 in | 9 mm<br>0.35 in | 12405-00009          |



### Abhängearm Ø 12 mm, gerade

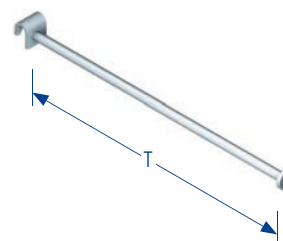
BE: 10 Stück  
OU: 10 pieces

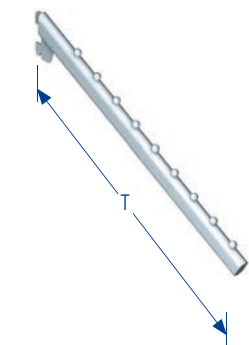
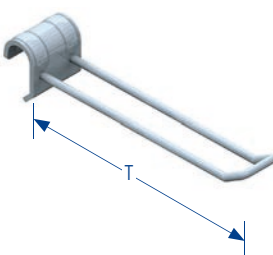
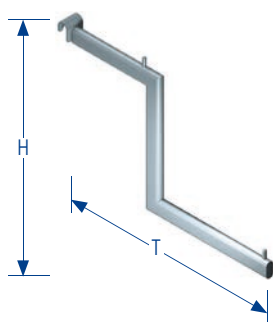
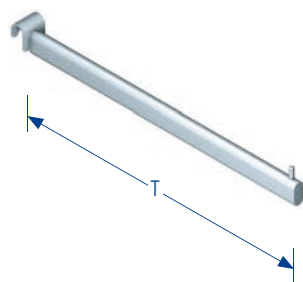
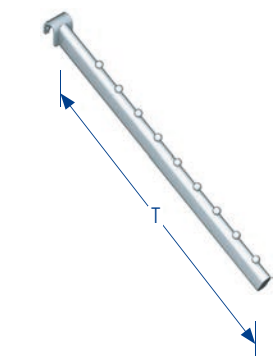
- mit C-Schale
- verchromt

### Single hook Ø 12 mm, straight

- with c-shell
- chrome-plated

| Tiefe<br>Depth    | Ø               | Art.-Nr.<br>Art.-No. |
|-------------------|-----------------|----------------------|
| 400 mm<br>15.7 in | 12 mm<br>0.5 in | 12405-00010          |





| Art.-Nr.<br>Art.-No. | Tiefe<br>Depth |
|----------------------|----------------|
|----------------------|----------------|

|             |                   |
|-------------|-------------------|
| 12408-00003 | 400 mm<br>15.7 in |
|-------------|-------------------|

| Art.-Nr.<br>Art.-No. | Tiefe<br>Depth |
|----------------------|----------------|
|----------------------|----------------|

|             |                   |
|-------------|-------------------|
| 12408-00010 | 400 mm<br>15.7 in |
| 12408-00013 | 300 mm<br>11.8 in |

| Art.-Nr.<br>Art.-No. | Höhe<br>Height | Tiefe<br>Depth |
|----------------------|----------------|----------------|
|----------------------|----------------|----------------|

|             |                  |                   |
|-------------|------------------|-------------------|
| 12408-00011 | 250 mm<br>9.8 in | 400 mm<br>15.7 in |
|-------------|------------------|-------------------|

| Art.-Nr.<br>Art.-No. | Tiefe<br>Depth |
|----------------------|----------------|
|----------------------|----------------|

|             |                  |
|-------------|------------------|
| 12405-00022 | 150 mm<br>6.0 in |
|-------------|------------------|

| Art.-Nr.<br>Art.-No. | Tiefe<br>Depth |
|----------------------|----------------|
|----------------------|----------------|

|             |                   |
|-------------|-------------------|
| 12407-00003 | 400 mm<br>15.7 in |
|-------------|-------------------|

BE: 10 Stück  
OU: 10 pieces

### Abhängearm 30/15, mit Kugeln

- mit C-Schale
- verchromt
- Tiefe 400 mm mit 9 Kugeln, 30° geneigt

### Ball arm with c-shell

- with c-shell
- chrome-plated
- depth 400 mm with 9 balls, 30° inclined

BE: 10 Stück  
OU: 10 pieces

### Abhängearm 30/15, gerade

- mit C-Schale
- mit Stift
- verchromt

### Clothes hanger holder 30/15, straight

- with c-shell
- with pin
- chrome-plated

BE: 10 Stück  
OU: 10 pieces

### Stufenabhängiger

- mit C-Schale
- verchromt

### Stepped arm

- with c-shell
- chrome-plated

BE: 10 Stück  
OU: 10 pieces

### Eurohalter 30/15 Doppelt

- verchromt
- mit C-Schale

### Double hook

- chrome-plated
- with c-shell

BE: 10 Stück  
OU: 10 pieces

### Abhängearm für 1-reihige Lochung, Raster 50

- verchromt, 9 Kugeln
- 30° geneigt
- für 1-reihige Lochung
- nur für Raster 50 mm

### Ball arm for single perforation, perforation 50

- chrome-plated, 9 balls
- 30° inclined
- for single perforation
- only for perforation 50 mm



# Edelstahl Stainless steel

Edelstahl  
Stainless steel

Abhängesystem  
Clothes hanger system

## Tragrahmen, 30 x 10

BE: 5 Stück  
OU: 5 pieces

- aus Rechteckrohr 30 x 10
- Einhängeteil mit 2 Haken R50
- Edelstahl geschliffen

## Support frame, 30 x 10

- in rectangular tube 30 x 10
- adapter for 2 hooks R50
- stainless steel grinded

## Trageschiene, 30 x 10

BE: 5 Stück  
OU: 5 pieces

- aus Rechteckrohr 30 x 10
- Einhängeteil mit 2 Haken R50
- Edelstahl geschliffen

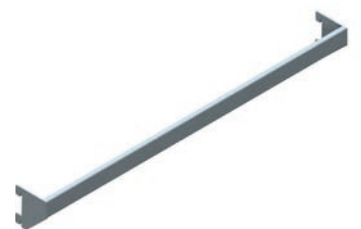
## Support frame, 30 x 10

- in rectangular tube 30 x 10
- adapter for 2 hooks R50
- stainless steel grinded

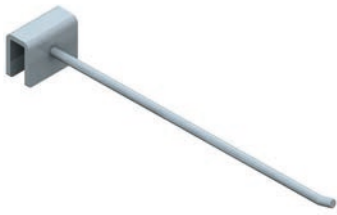
| Tiefe<br>Depth    | Achsmaß<br>Centre-to-<br>centre dim. | Art.-Nr.<br>Art.-No. |
|-------------------|--------------------------------------|----------------------|
| 330 mm<br>13.0 in | 625 mm<br>24.6 in                    | 15001-00016          |
| 330 mm<br>13.0 in | 1000 mm<br>39.4 in                   | 15001-00017          |



| Achsmaß<br>Centre-to-<br>centre dim. | Art.-Nr.<br>Art.-No. |
|--------------------------------------|----------------------|
| 625 mm<br>24.6 in                    | 15001-00000          |
| 1000 mm<br>39.4 in                   | 15001-00001          |







| Art.-Nr.<br>Art.-No. | Tiefe<br>Depth   | Ø              |
|----------------------|------------------|----------------|
| 15001-00005          | 125 mm<br>5.0 in | 5 mm<br>0.2 in |
| 15001-00006          | 200 mm<br>7.9 in | 5 mm<br>0.2 in |

**Abhängerträger Ø 5 mm**

- Edelstahl geschliffen

**Single hook Ø 5 mm**

- stainless steel grinded

BE: 10 Stück  
OU: 10 pieces



| Art.-Nr.<br>Art.-No. | Tiefe<br>Depth    | Ø              |
|----------------------|-------------------|----------------|
| 15001-00003          | 250 mm<br>9.8 in  | 7 mm<br>0.3 in |
| 15001-00004          | 300 mm<br>11.8 in | 7 mm<br>0.3 in |

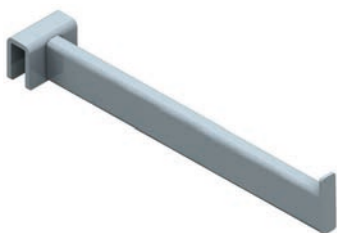
**Abhängerträger Ø 7 mm**

- Edelstahl geschliffen

**Single hook Ø 7 mm**

- stainless steel grinded

BE: 10 Stück  
OU: 10 pieces



| Art.-Nr.<br>Art.-No. | Tiefe<br>Depth    |
|----------------------|-------------------|
| 15001-00008          | 200 mm<br>7.9 in  |
| 15001-00009          | 300 mm<br>11.8 in |

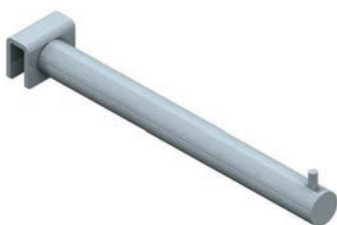
**Abhängearm, 25 x 10 mm gerade**

- Edelstahl geschliffen

**Single hook, 25 x 10 mm straight**

- stainless steel grinded

BE: 10 Stück  
OU: 10 pieces



| Art.-Nr.<br>Art.-No. | Tiefe<br>Depth    | Ø               |
|----------------------|-------------------|-----------------|
| 15001-00010          | 200 mm<br>7.9 in  | 20 mm<br>0.8 in |
| 15001-00011          | 300 mm<br>11.8 in | 20 mm<br>0.8 in |

**Abhängearm, rund**

- Edelstahl geschliffen

**Single hook, round**

- stainless steel grinded

BE: 10 Stück  
OU: 10 pieces

# Raster 50 Perforation 50

Edelstahl  
Stainless steel

Abhängesystem  
Clothes hanger system

## Abhängearm, wellig

- Edelstahl geschliffen

## Single hook, waved

- stainless steel grinded

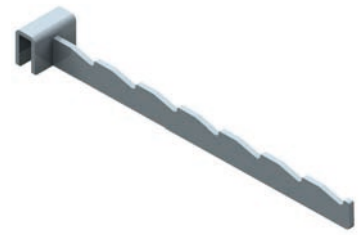
BE: 10 Stück  
OU: 10 pieces

Tiefe  
Depth

Art.-Nr.  
Art.-No.

250 mm  
9.8 in

15001-00020



## Holzbodenträger

- Aufnahmeloch Ø 5,5 mm
- Edelstahl geschliffen

## Wooden shelf bracket

- locating hole Ø 5,5 mm
- stainless steel grinded

BE: 10 Paar  
OU: 10 paires

Tiefe  
Depth

Höhe  
Height

Art.-Nr.  
Art.-No.

300 mm  
11.8 in

22 mm  
0.9 in

15001-00024

